

# **Creative Fabrica**

**Embroidery Design  
Sewing Information**

**[www.creativefabrica.com/embroidery/](http://www.creativefabrica.com/embroidery/)**

© Creative Fabrica

# Production Worksheet

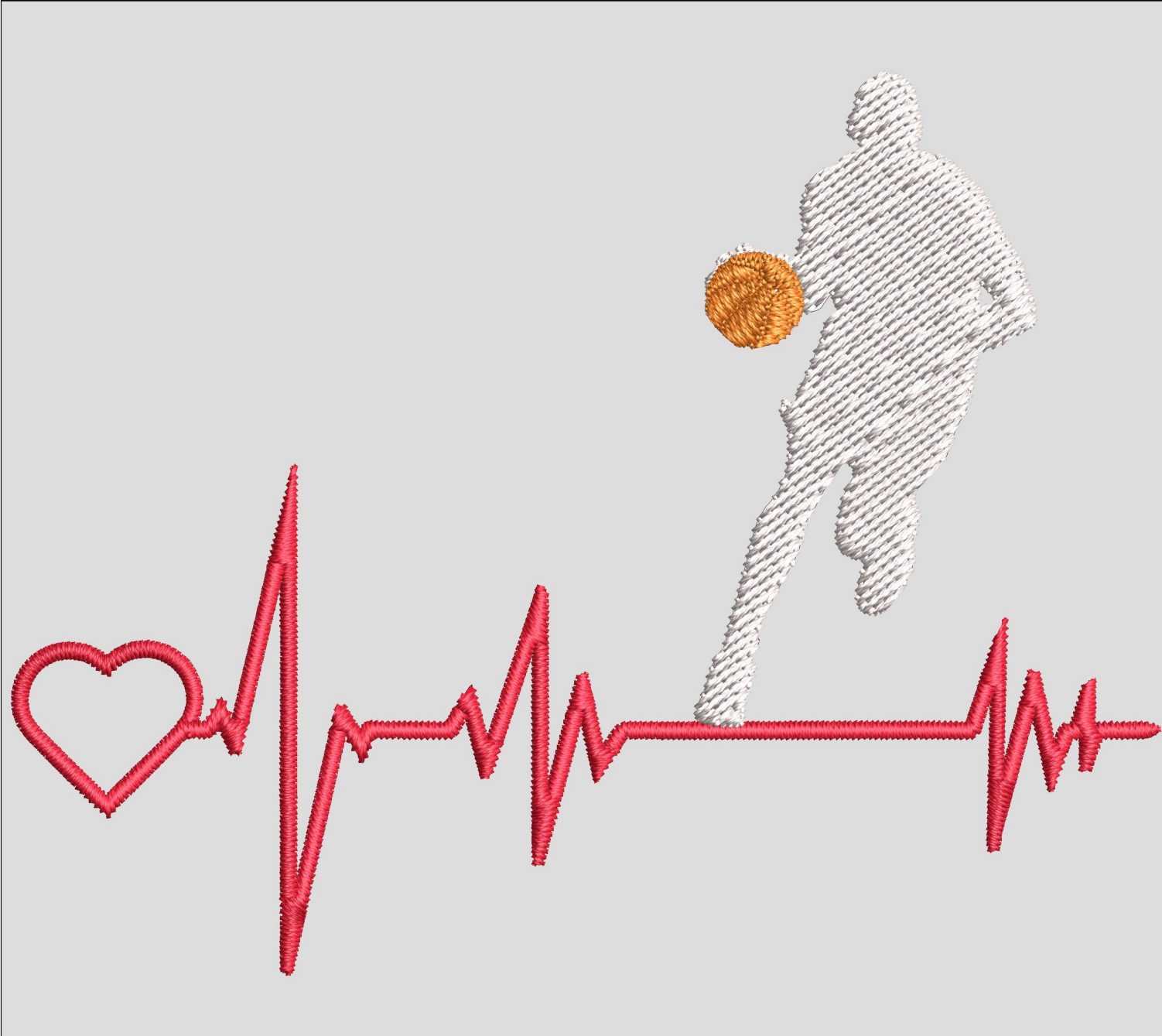
Wilcom EmbroideryStudio - Designing

## \*HONI-BASKETBALL-4INCH-22\*

Design: **Honi-Basketball-4inch-22**

Title:

Stitches: 4,575  
Height: 3.00 in  
Width: 3.81 in  
Colors: 3  
Colorway: Colorway 1  
Zoom: 2.03



Machine format: Tajima  
Color changes: 2  
Stops: 3  
Trims: 7  
Appliqués: 0  
Left: 14.9 mm  
Right: 81.8 mm  
Up: 55.3 mm  
Down: 20.8 mm  
EndX: 1.93 in  
EndY: 1.47 in  
Area: 11.40 in<sup>2</sup>  
Max stitch: 6.9 mm  
Min stitch: 0.1 mm  
Max jump: 6.9 mm  
Total thread: 68.21ft  
Total bobbin: 22.05ft

Stop Sequence:

#	N#	Color	St.	Code	Name	Chart
1.	18		2,173		R237 G26 B52	
2.	16		1,933		R245 G245 B245	
3.	17		467		R244 G128 B34	

# Production Worksheet

Wilcom EmbroideryStudio - Designing

## \*HONI-BASKETBALL-5INCH-22\*


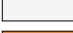

Design: **Honi-Basketball-5inch-22**

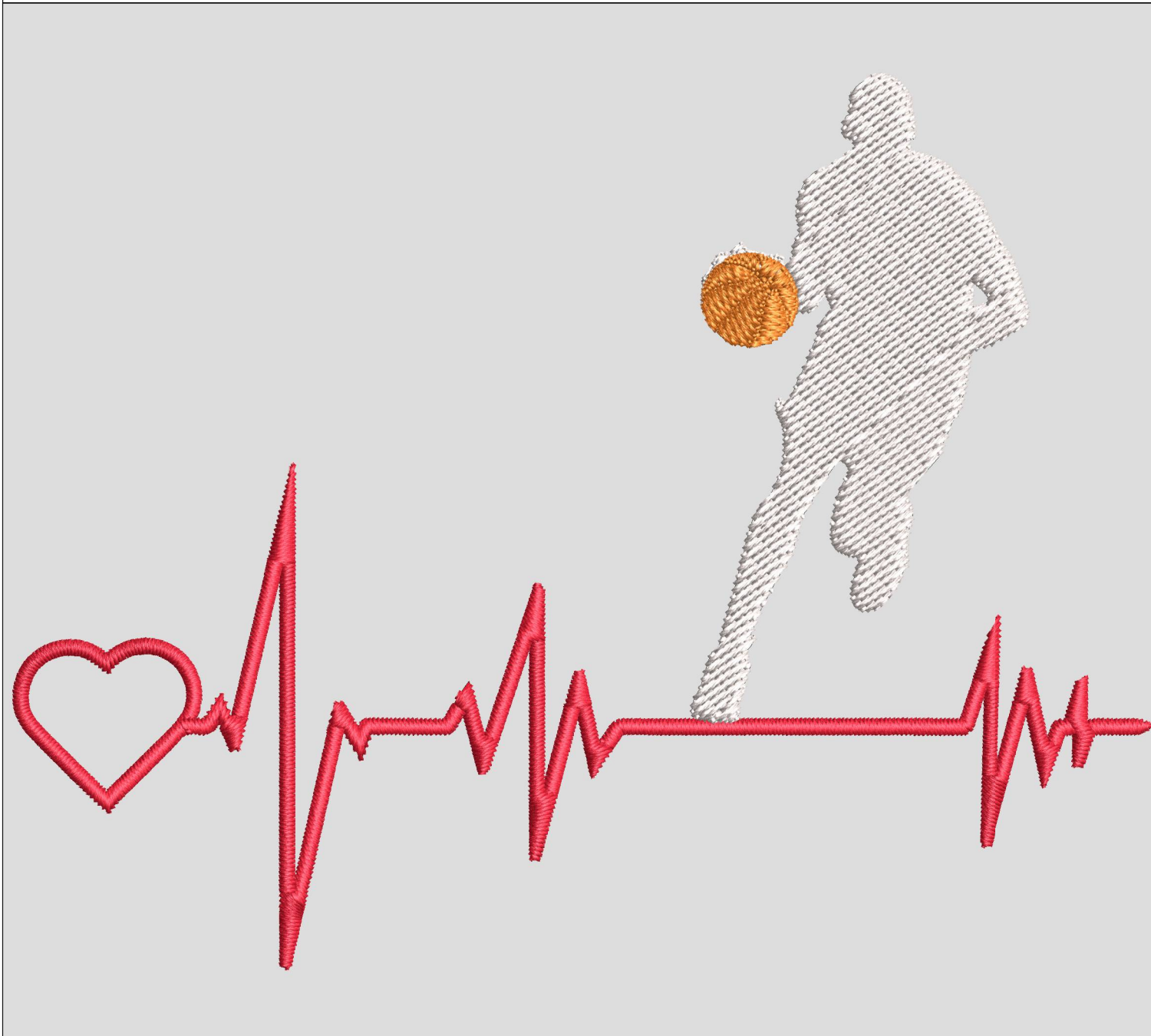
Title:

Stitches: 5,826  
Height: 3.78 in  
Width: 4.81 in  
Colors: 3  
Colorway: Colorway 1  
Zoom: 1.60

Machine format: Tajima  
Color changes: 2  
Stops: 3  
Trims: 7  
Appliqués: 0  
Left: 18.6 mm  
Right: 103.5 mm  
Up: 70.5 mm  
Down: 25.6 mm  
EndX: 2.44 in  
EndY: 1.89 in  
Area: 18.18 in<sup>2</sup>  
Max stitch: 6.5 mm  
Min stitch: 0.1 mm  
Max jump: 6.5 mm  
Total thread: 92.91ft  
Total bobbin: 31.82ft

### Stop Sequence:

#	N#	Color	St.	Code	Name	Chart
1.	18		2,685		R237 G26 B52	
2.	16		2,541		R245 G245 B245	
3.	17		598		R244 G128 B34	



# Production Worksheet

Wilcom EmbroideryStudio - Designing

## \*HONI-BASKETBALL-7INCH-22\*

Design: **Honi-Basketball-7inch-22**

Title:

Stitches: 8,902

Height: 5.36 in

Width: 6.81 in

Colors: 3

Colorway: Colorway 1

Zoom: 1.13

Machine format: Tajima

Color changes: 2

Stops: 3

Trims: 7

Appliqués: 0

Left: 26.4 mm

Right: 146.5 mm

Up: 99.9 mm

Down: 36.2 mm

EndX: 3.45 in

EndY: 2.68 in

Area 36.46 in<sup>2</sup>

Max stitch: 6.9 mm




Min stitch: 0.2 mm

Max jump: 6.9 mm

Total thread: 158.33ft

Total bobbin: 58.63ft

Stop Sequence:

#	N#	Color	St.	Code	Name	Chart
1.	18		3,762		R237 G26 B52	
2.	16		4,303		R245 G245 B245	
3.	17		835		R244 G128 B34	

