



Creative Fabrica

**Embroidery Design
Sewing Information**

www.creativefabrica.com/embroidery/

© Creative Fabrica

Design:Aquarius 72mm.EMB

Height: 72.4 mm
 Width: 68.3 mm
 Stitches: 1,301
 Colors: 1
 Color changes: 0
 Trims: 1
 Machine format: Janome
 Hoop: Tubular 2
 Fabric type: Pure Cotton
 Required stabilizer: Topping:
 Backing: Tear Away x 2
 Total bobbin: 1.48m

Color Sequence:

#	Color	Element	Code	Name	Chart
1.	1		0020	Black	Isacord 40

Thread usage: 5.10m

#	Color	Name	Length
1.	1	Black	5.10m

Cord usage: 0.00m

CS#	Color	Diameter	Length
-----	-------	----------	--------



Aquarius

Design:Aquarius 81mm.EMB

Height: 80.5 mm
 Width: 75.9 mm
 Stitches: 1,402
 Colors: 1
 Color changes: 0
 Trims: 1
 Machine format: Janome
 Hoop: Tubular 2
 Fabric type: Pure Cotton
 Required stabilizer: Topping:
 Backing: Tear Away x 2
 Total bobbin: 1.68m

Color Sequence:

#	Color	Element	Code	Name	Chart
1.	1		0020	Black	Isacord 40

Thread usage: 5.63m

#	Color	Name	Length
1.	1	Black	5.63m

Cord usage: 0.00m

CS#	Color	Diameter	Length
-----	-------	----------	--------



Aquarius

Design:Aquarius 90mm.EMB

Height: 89.4 mm
 Width: 84.3 mm
 Stitches: 1,528
 Colors: 1
 Color changes: 0
 Trims: 1
 Machine format: Janome
 Hoop: Tubular 2
 Fabric type: Pure Cotton
 Required stabilizer: Topping:
 Backing: Tear Away x 2
 Total bobbin: 1.91m

Color Sequence:

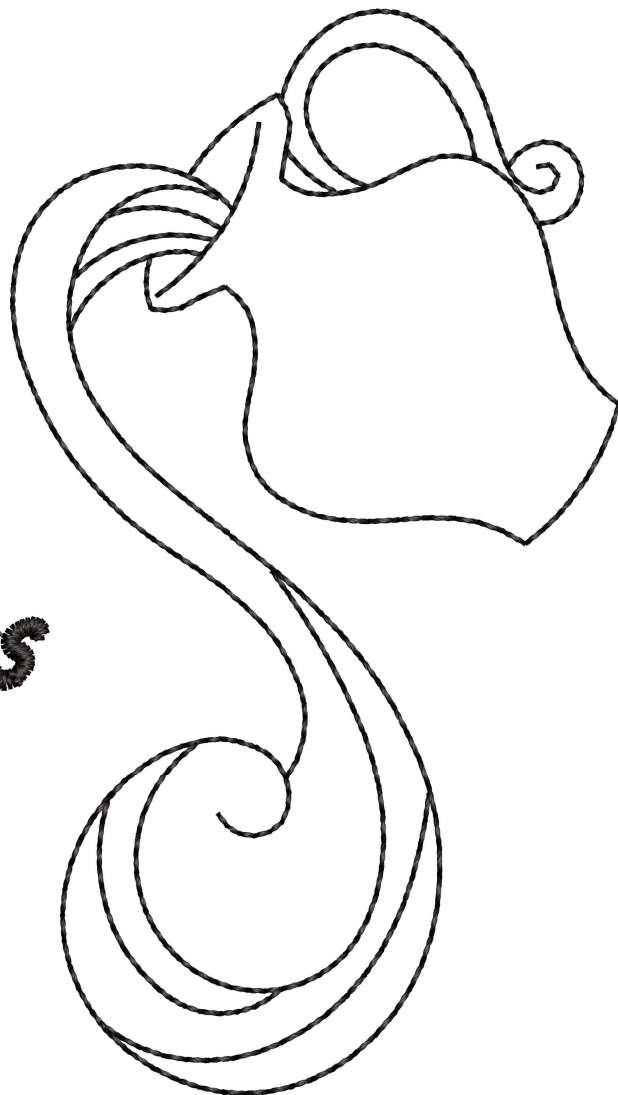
#	Color	Element	Code	Name	Chart
1.	1		0020	Black	Isacord 40

Thread usage: 6.28m

#	Color	Name	Length
1.	1	Black	6.28m

Cord usage: 0.00m

CS#	Color	Diameter	Length
-----	-------	----------	--------



Aquarius

Design:Aries 66mm.EMB

Height: 66.4 mm
 Width: 72.4 mm
 Stitches: 1,820
 Colors: 1
 Color changes: 0
 Trims: 2
 Machine format: Janome
 Hoop: Tubular 2
 Fabric type: Pure Cotton
 Required stabilizer: Topping:
 Backing: Tear Away x 2
 Total bobbin: 2.20m

Color Sequence:

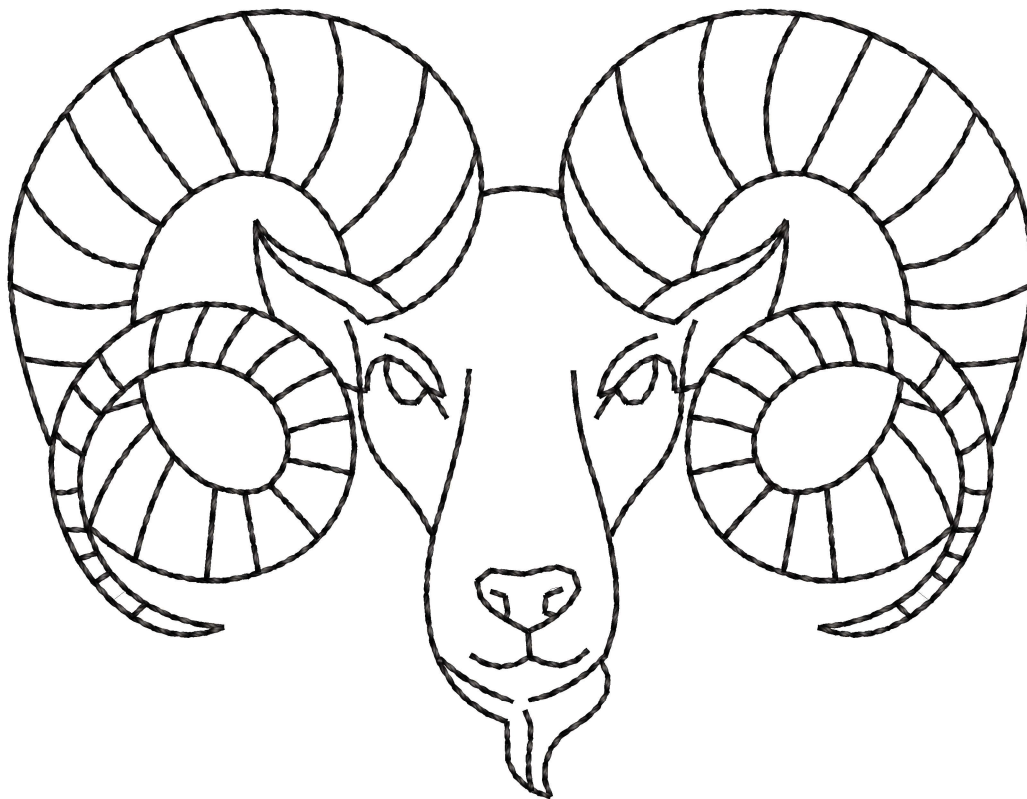
#	Color	Element	Code	Name	Chart
1.	1		0020	Black	Isacord 40

Thread usage: 7.35m

#	Color	Name	Length
1.	1	Black	7.35m

Cord usage: 0.00m

CS#	Color	Diameter	Length
-----	-------	----------	--------



Aries

Design:Aries 74mm.EMB

Height: 73.7 mm

Width: 80.4 mm

Stitches: 1,945

Colors: 1

Color changes: 0

Trims: 2

Machine format: Janome

Hoop: Tubular 2

Fabric type: Pure Cotton

Required stabilizer: Topping:

Backing: Tear Away x 2

Total bobbin: 2.46m

Color Sequence:

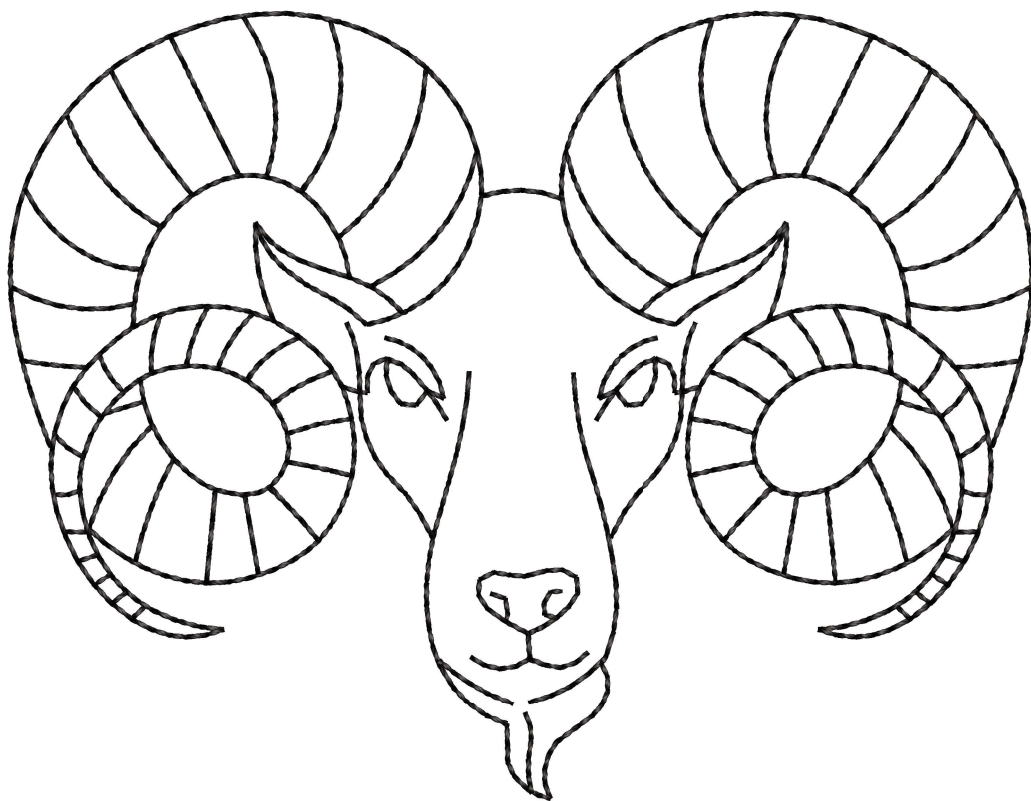
#	Color	Element	Code	Name	Chart
1.	1		0020	Black	Isacord 40

Thread usage: 8.04m

#	Color	Name	Length
1.	1	Black	8.04m

Cord usage: 0.00m

CS#	Color	Diameter	Length
-----	-------	----------	--------



Aries

Design:Aries 82mm.EMB

Height: 81.9 mm

Width: 89.4 mm

Stitches: 2,078

Colors: 1

Color changes: 0

Trims: 2

Machine format: Janome

Hoop: Tubular 2

Fabric type: Pure Cotton

Required stabilizer: Topping:

Backing: Tear Away x 2

Total bobbin: 2.76m

Color Sequence:

#	Color	Element	Code	Name	Chart
1.	1		0020	Black	Isacord 40

1.	1		0020	Black	Isacord 40
----	---	--	------	-------	------------

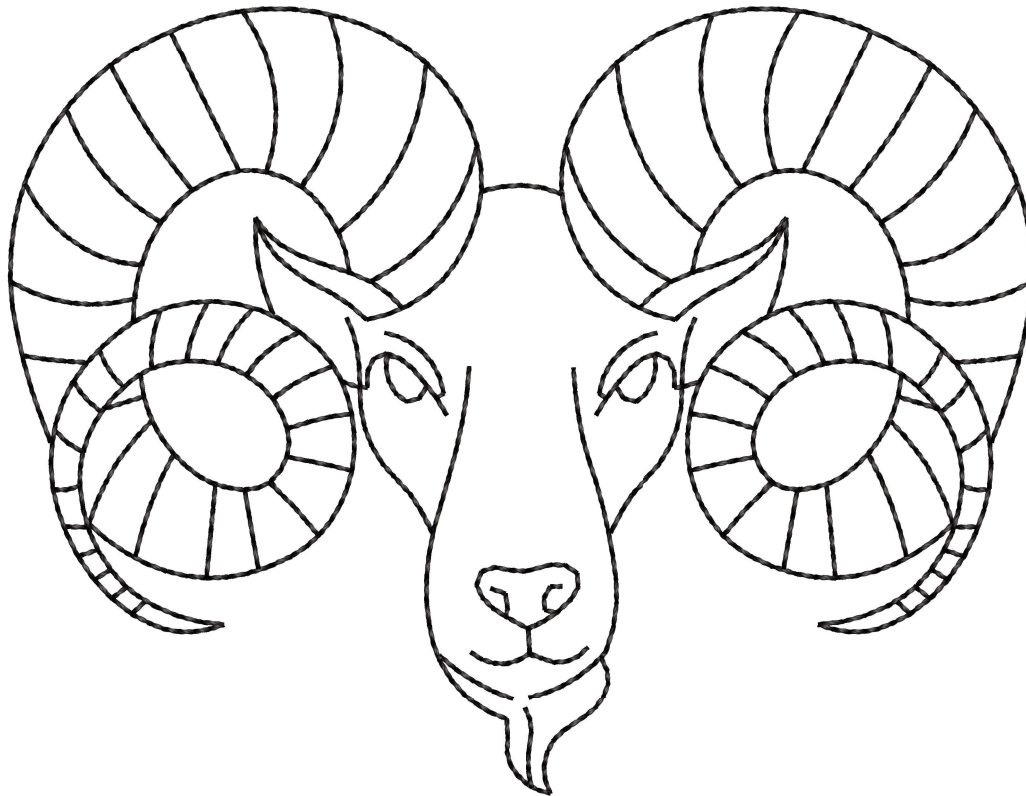
Thread usage: 8.81m

#	Color	Name	Length
1.	1	Black	8.81m

1.	1	Black	8.81m
----	---	-------	-------

Cord usage: 0.00m

CS#	Color	Diameter	Length
-----	-------	----------	--------



Aries

Design:Cancer 76mm.EMB

Height: 75.7 mm
 Width: 72.4 mm
 Stitches: 1,515
 Colors: 1
 Color changes: 0
 Trims: 1
 Machine format: Janome
 Hoop: Tubular 2
 Fabric type: Pure Cotton
 Required stabilizer: Topping:
 Backing: Tear Away x 2
 Total bobbin: 1.80m

Color Sequence:

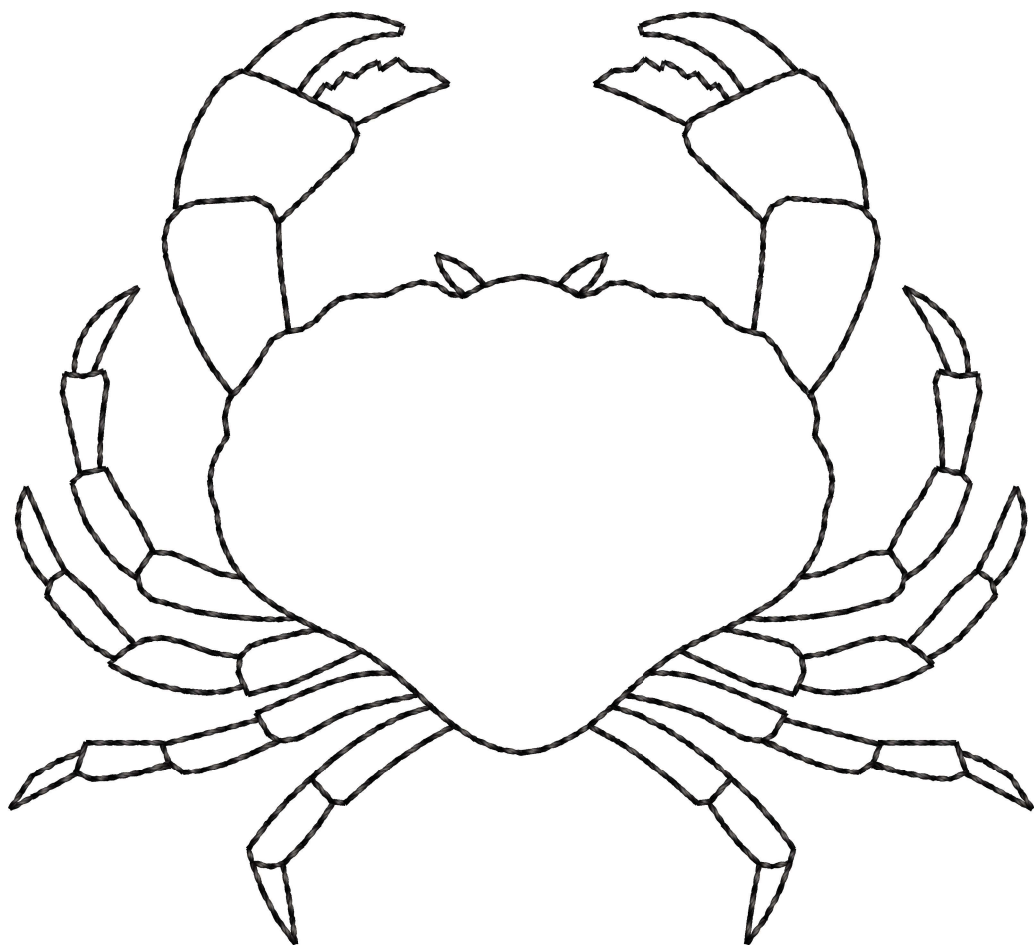
#	Color	Element	Code	Name	Chart
1.	1		0020	Black	Isacord 40

Thread usage: 6.07m

#	Color	Name	Length
1.	1	Black	6.07m

Cord usage: 0.00m

CS#	Color	Diameter	Length
-----	-------	----------	--------



Cancer

Design:Cancer 84mm.EMB

Height: 84.1 mm
 Width: 80.5 mm
 Stitches: 1,653
 Colors: 1
 Color changes: 0
 Trims: 1
 Machine format: Janome
 Hoop: Tubular 2
 Fabric type: Pure Cotton
 Required stabilizer: Topping:
 Backing: Tear Away x 2
 Total bobbin: 2.03m

Color Sequence:

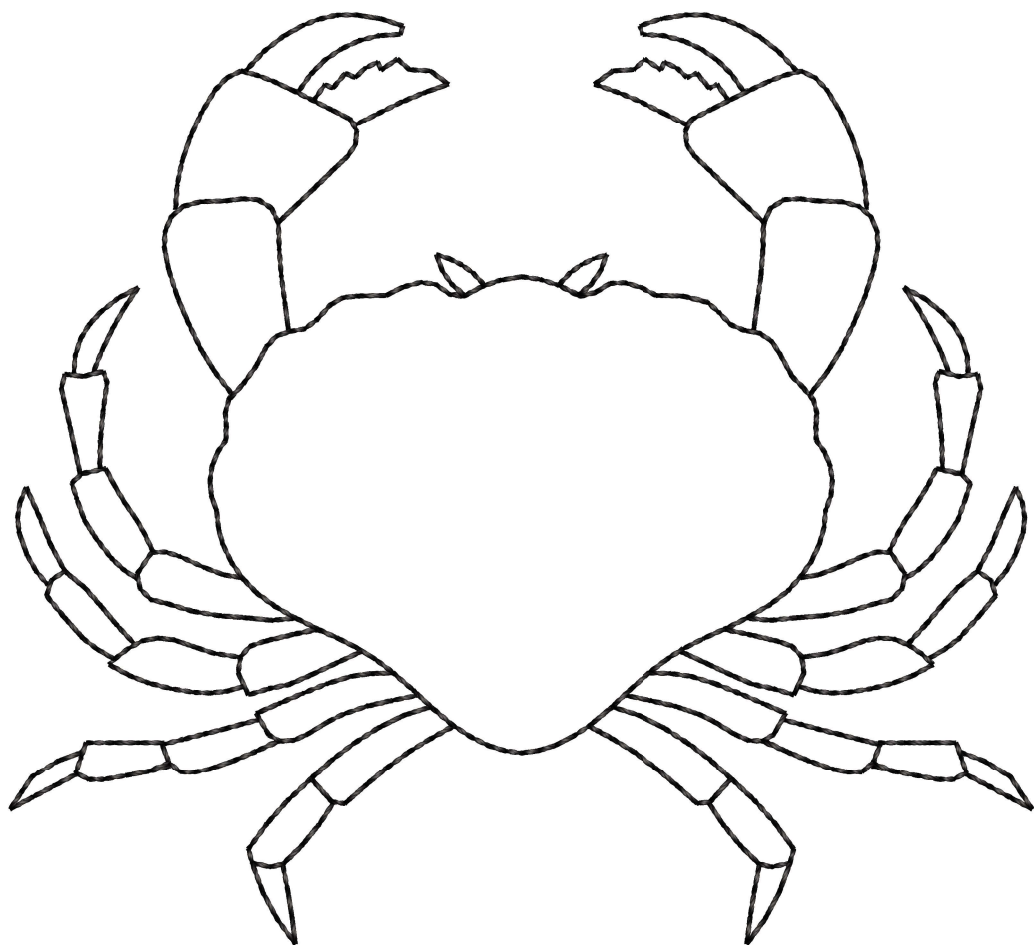
#	Color	Element	Code	Name	Chart
1.	1		0020	Black	Isacord 40

Thread usage: 6.72m

#	Color	Name	Length
1.	1	Black	6.72m

Cord usage: 0.00m

CS#	Color	Diameter	Length
-----	-------	----------	--------



Cancer

Design:Cancer 93mm.EMB

Height: 93.4 mm
 Width: 89.4 mm
 Stitches: 1,786
 Colors: 1
 Color changes: 0
 Trims: 1
 Machine format: Janome
 Hoop: Tubular 2
 Fabric type: Pure Cotton
 Required stabilizer: Topping:
 Backing: Tear Away x 2
 Total bobbin: 2.29m

Color Sequence:

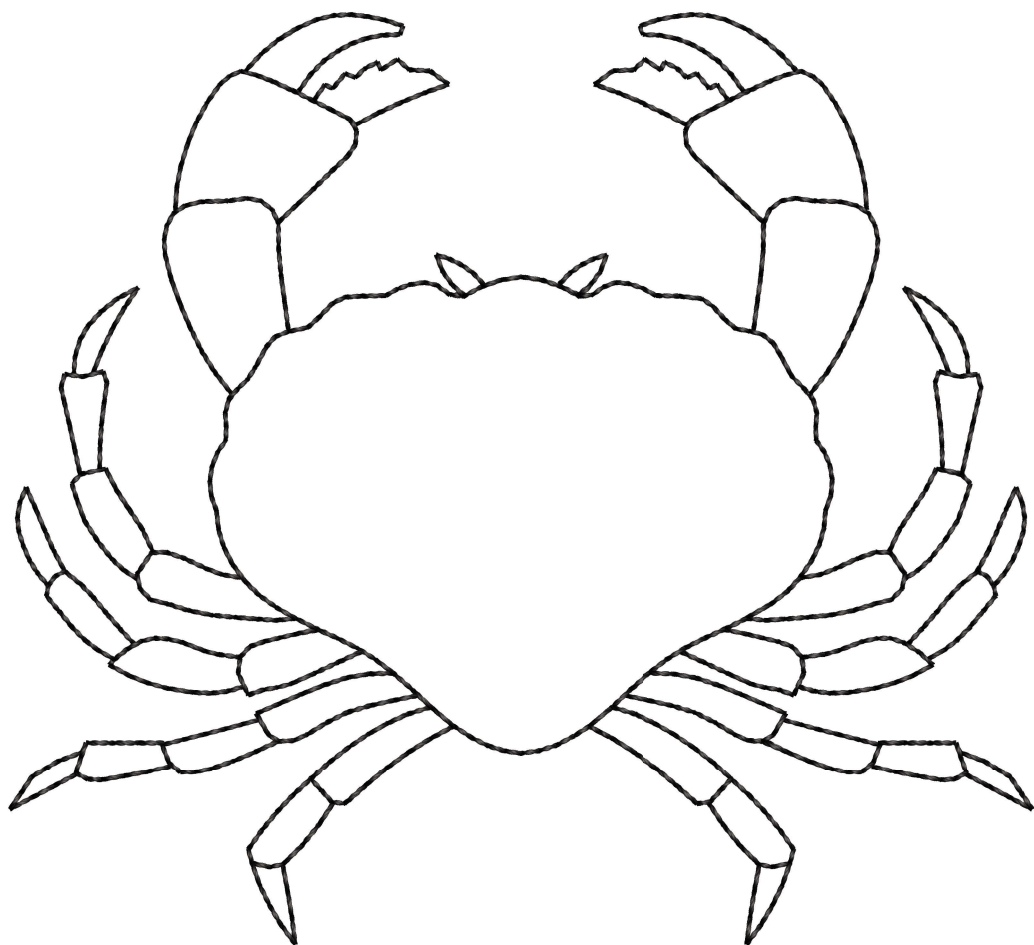
#	Color	Element	Code	Name	Chart
1.	1		0020	Black	Isacord 40

Thread usage: 7.43m

#	Color	Name	Length
1.	1	Black	7.43m

Cord usage: 0.00m

CS#	Color	Diameter	Length
-----	-------	----------	--------



Cancer

Design: Capricorn 64mm.EMB

Height: 63.6 mm
 Width: 72.4 mm
 Stitches: 1,664
 Colors: 1
 Color changes: 0
 Trims: 1
 Machine format: Janome
 Hoop: Tubular 2
 Fabric type: Pure Cotton
 Required stabilizer: Topping:
 Backing: Tear Away x 2
 Total bobbin: 1.78m

Color Sequence:

#	Color	Element	Code	Name	Chart
1.	1		0020	Black	Isacord 40

Thread usage: 6.33m

#	Color	Name	Length
1.	1	Black	6.33m

Cord usage: 0.00m

CS#	Color	Diameter	Length
-----	-------	----------	--------



Capricorn

Design: Capricorn 71mm.EMB

Height: 70.7 mm
 Width: 80.4 mm
 Stitches: 1,814
 Colors: 1
 Color changes: 0
 Trims: 2
 Machine format: Janome
 Hoop: Tubular 2
 Fabric type: Pure Cotton
 Required stabilizer: Topping:
 Backing: Tear Away x 2
 Total bobbin: 2.02m

Color Sequence:

#	Color	Element	Code	Name	Chart
1.	1		0020	Black	Isacord 40

Thread usage: 7.04m

#	Color	Name	Length
1.	1	Black	7.04m

Cord usage: 0.00m

CS#	Color	Diameter	Length
-----	-------	----------	--------



Capricorn

Design:Capricorn 78mm.EMB

Height: 78.5 mm

Width: 89.4 mm

Stitches: 1,938

Colors: 1

Color changes: 0

Trims: 2

Machine format: Janome

Hoop: Tubular 2

Fabric type: Pure Cotton

Required stabilizer: Topping:

Backing: Tear Away x 2

Total bobbin: 2.29m

Color Sequence:

#	Color	Element	Code	Name	Chart
1.	1		0020	Black	Isacord 40

Thread usage: 7.75m

#	Color	Name	Length
1.	1	Black	7.75m

Cord usage: 0.00m

CS#	Color	Diameter	Length
-----	-------	----------	--------



Capricorn

Design: Gemini 45mm.EMB

Height: 44.8 mm
 Width: 72.4 mm
 Stitches: 1,515
 Colors: 1
 Color changes: 0
 Trims: 6
 Machine format: Janome
 Hoop: Tubular 2
 Fabric type: Pure Cotton
 Required stabilizer: Topping:
 Backing: Tear Away x 2
 Total bobbin: 1.74m

Color Sequence:

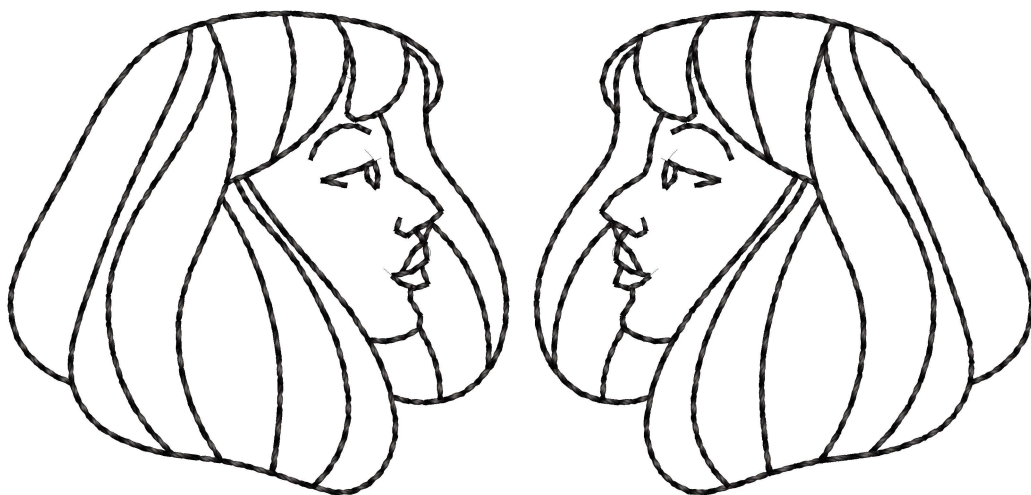
#	Color	Element	Code	Name	Chart
1.	1		0020	Black	Isacord 40

Thread usage: 5.97m

#	Color	Name	Length
1.	1	Black	5.97m

Cord usage: 0.00m

CS#	Color	Diameter	Length
-----	-------	----------	--------



Gemini

Design: Gemini 50mm.EMB

Height: 49.8 mm
 Width: 80.4 mm
 Stitches: 1,613
 Colors: 1
 Color changes: 0
 Trims: 6
 Machine format: Janome
 Hoop: Tubular 2
 Fabric type: Pure Cotton
 Required stabilizer: Topping:
 Backing: Tear Away x 2
 Total bobbin: 1.95m

Color Sequence:

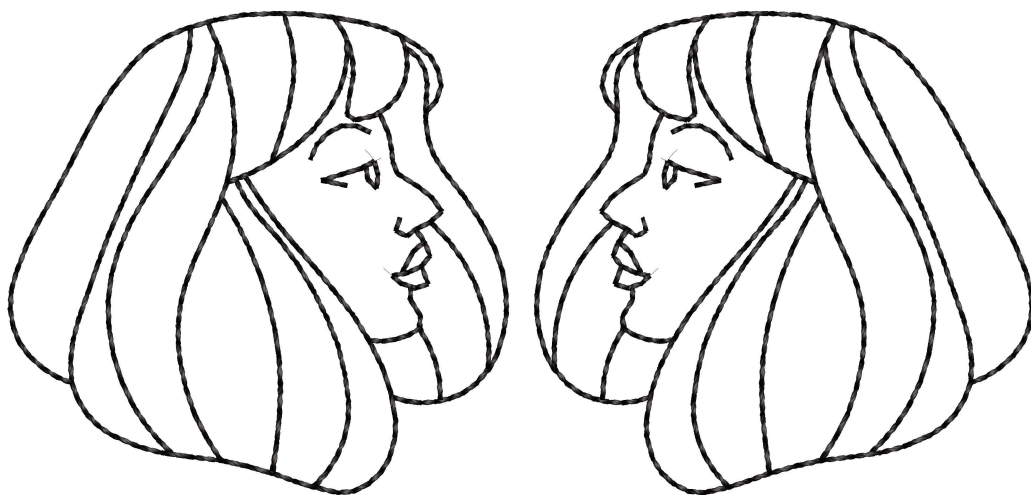
#	Color	Element	Code	Name	Chart
1.	1		0020	Black	Isacord 40

Thread usage: 6.52m

#	Color	Name	Length
1.	1	Black	6.52m

Cord usage: 0.00m

CS#	Color	Diameter	Length
-----	-------	----------	--------



Gemini

Design: Gemini 55mm.EMB

Height: 55.4 mm
 Width: 89.4 mm
 Stitches: 1,744
 Colors: 1
 Color changes: 0
 Trims: 6
 Machine format: Janome
 Hoop: Tubular 2
 Fabric type: Pure Cotton
 Required stabilizer: Topping:
 Backing: Tear Away x 2
 Total bobbin: 2.21m

Color Sequence:

#	Color	Element	Code	Name	Chart
1.	1		0020	Black	Isacord 40

Thread usage: 7.21m

#	Color	Name	Length
1.	1	Black	7.21m

Cord usage: 0.00m

CS#	Color	Diameter	Length
-----	-------	----------	--------



Gemini

Design:Leo 80mm.EMB

Height: 79.9 mm

Width: 57.9 mm

Stitches: 1,575

Colors: 1

Color changes: 0

Trims: 5

Machine format: Janome

Hoop: Tubular 2

Fabric type: Pure Cotton

Required stabilizer: Topping:

Backing: Tear Away x 2

Total bobbin: 2.07m

Color Sequence:

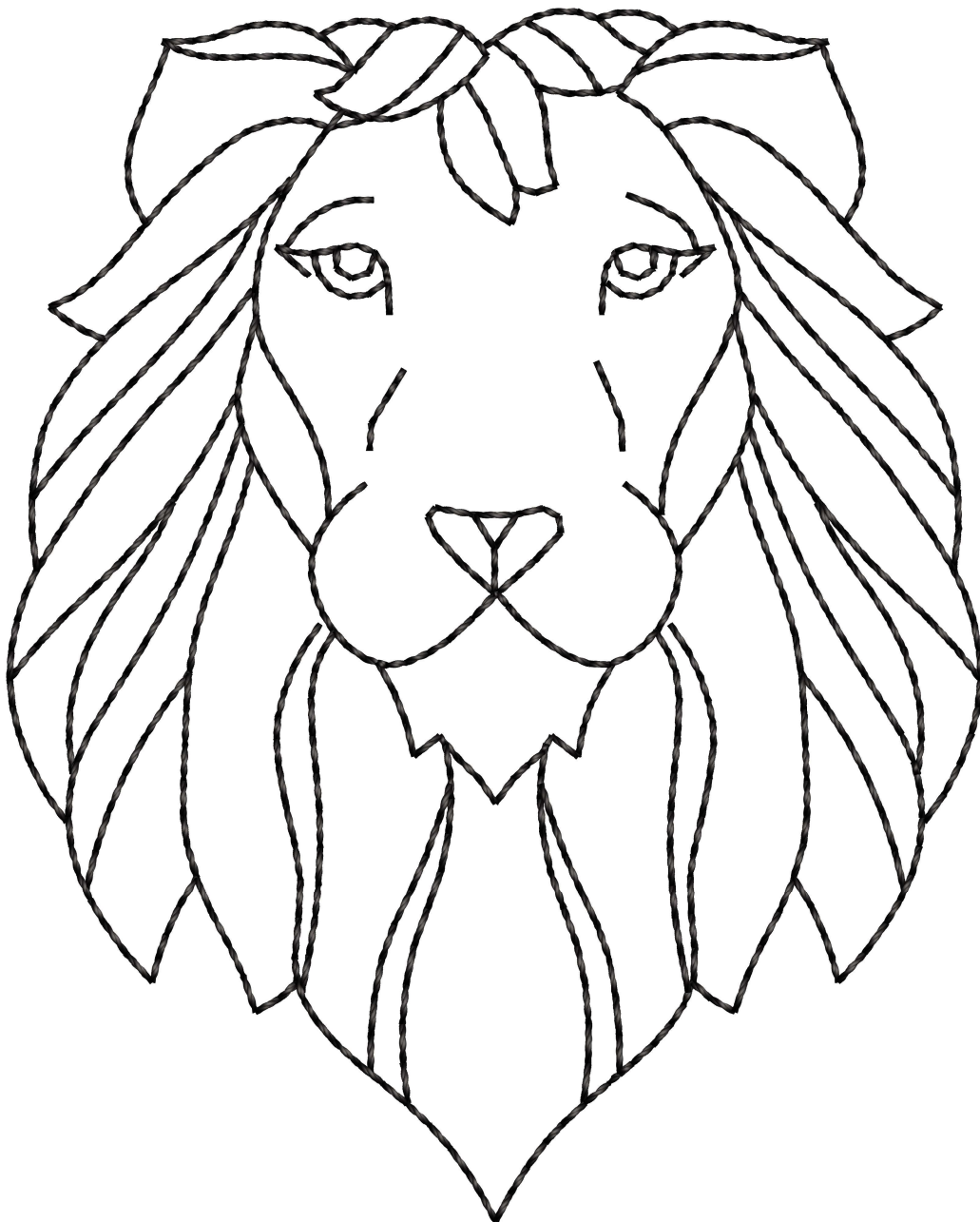
#	Color	Element	Code	Name	Chart
1.	1		0020	Black	Isacord 40

Thread usage: 6.64m

#	Color	Name	Length
1.	1	Black	6.64m

Cord usage: 0.00m

CS#	Color	Diameter	Length
-----	-------	----------	--------



Leo

Design: Leo 89mm.EMB

Height: 88.8 mm

Width: 64.4 mm

Stitches: 1,701

Colors: 1

Color changes: 0

Trims: 5

Machine format: Janome

Hoop: Tubular 2

Fabric type: Pure Cotton

Required stabilizer: Topping:

Backing: Tear Away x 2

Total bobbin: 2.31m

Color Sequence:

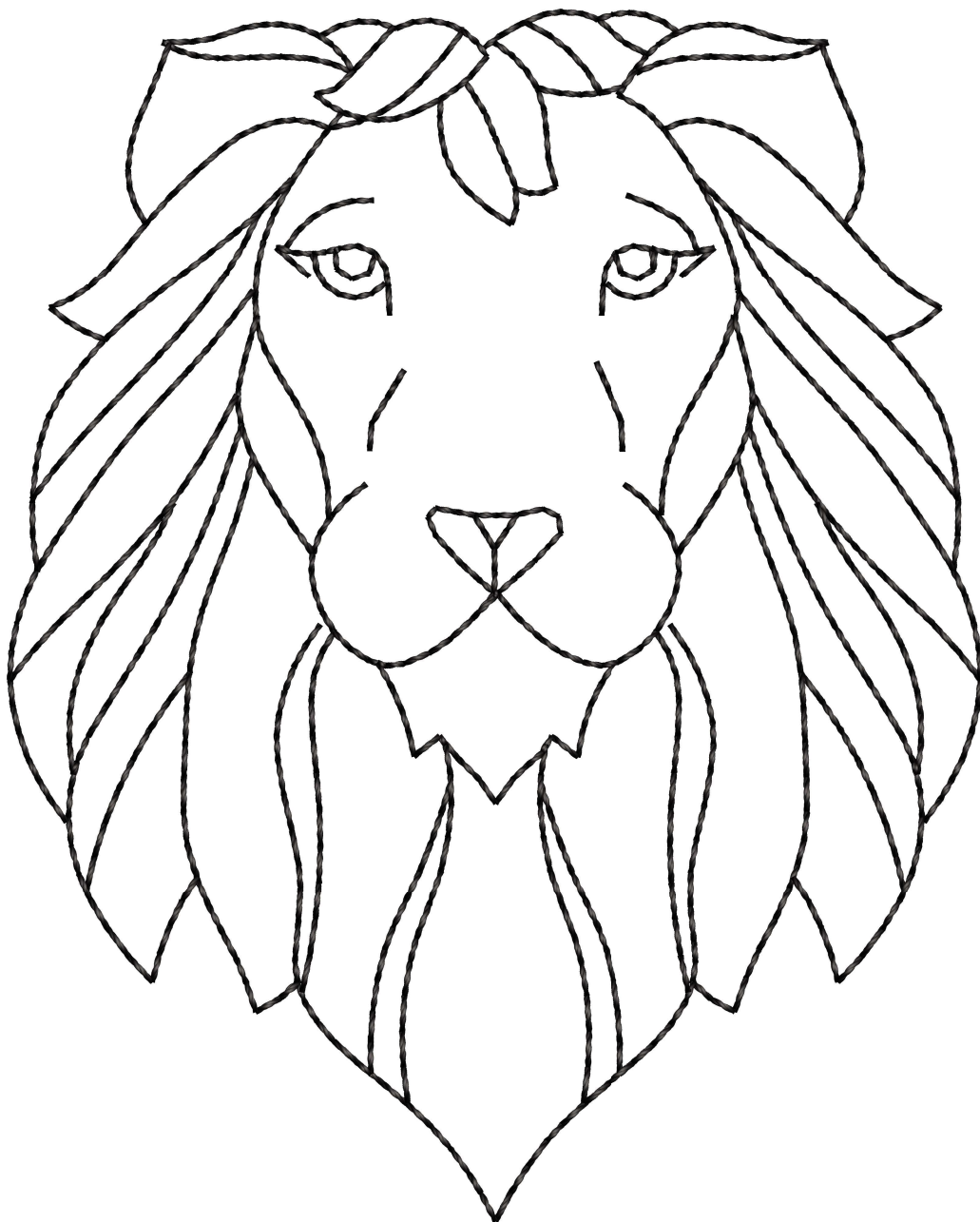
#	Color	Element	Code	Name	Chart
1.	1		0020	Black	Isacord 40

Thread usage: 7.30m

#	Color	Name	Length
1.	1	Black	7.30m

Cord usage: 0.00m

CS#	Color	Diameter	Length
-----	-------	----------	--------



Leo

Design:Leo 99mm.EMB

Height: 98.6 mm

Width: 71.5 mm

Stitches: 1,819

Colors: 1

Color changes: 0

Trims: 5

Machine format: Janome

Hoop: Tubular 2

Fabric type: Pure Cotton

Required stabilizer: Topping:

Backing: Tear Away x 2

Total bobbin: 2.58m

Color Sequence:

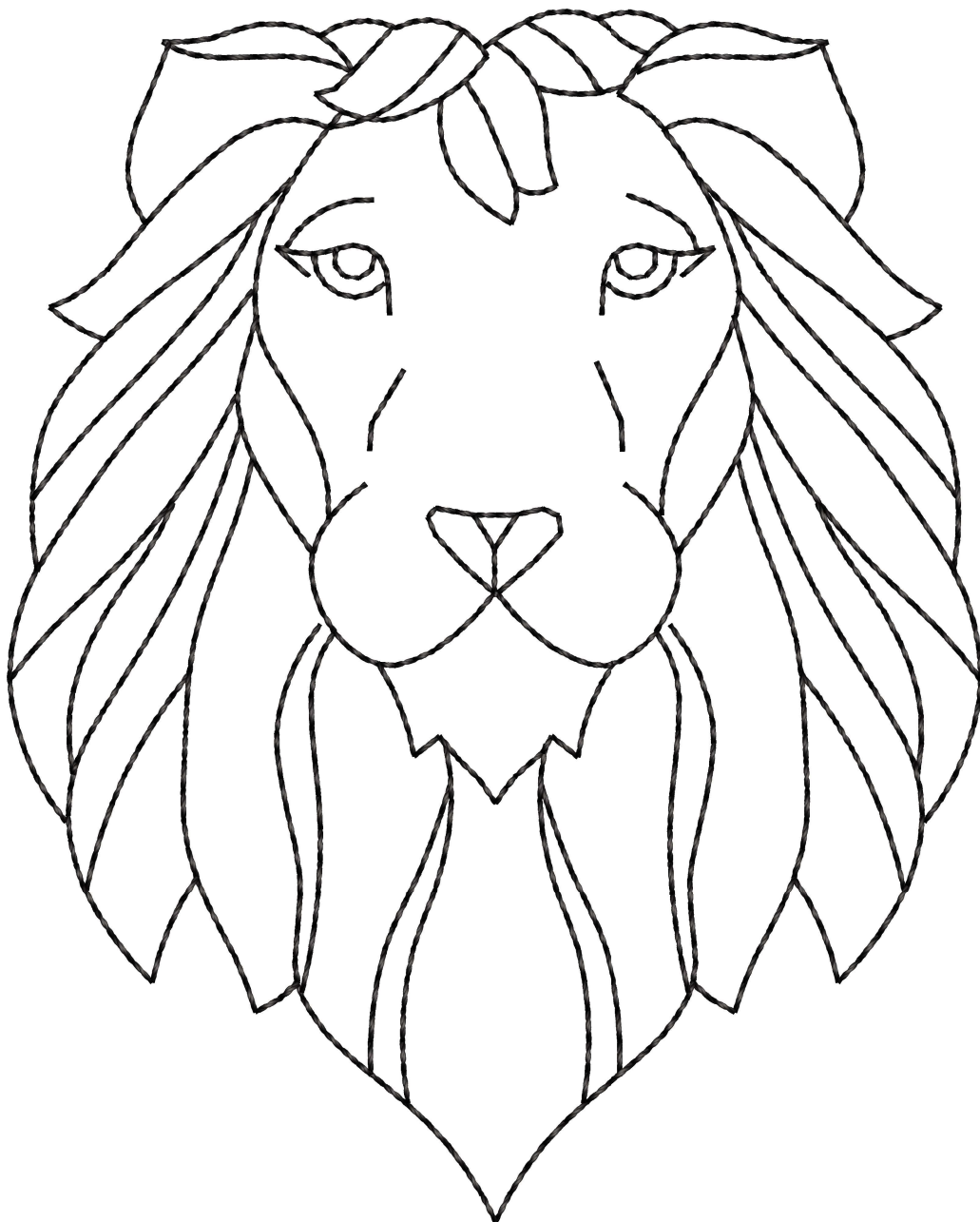
#	Color	Element	Code	Name	Chart
1.	1		0020	Black	Isacord 40

Thread usage: 7.99m

#	Color	Name	Length
1.	1	Black	7.99m

Cord usage: 0.00m

CS#	Color	Diameter	Length
-----	-------	----------	--------



Leo

Design:Libra 59mm.EMB

Height: 59.0 mm
 Width: 72.5 mm
 Stitches: 1,146
 Colors: 1
 Color changes: 0
 Trims: 1
 Machine format: Janome
 Hoop: Tubular 2
 Fabric type: Pure Cotton
 Required stabilizer: Topping:
 Backing: Tear Away x 2
 Total bobbin: 1.51m

Color Sequence:

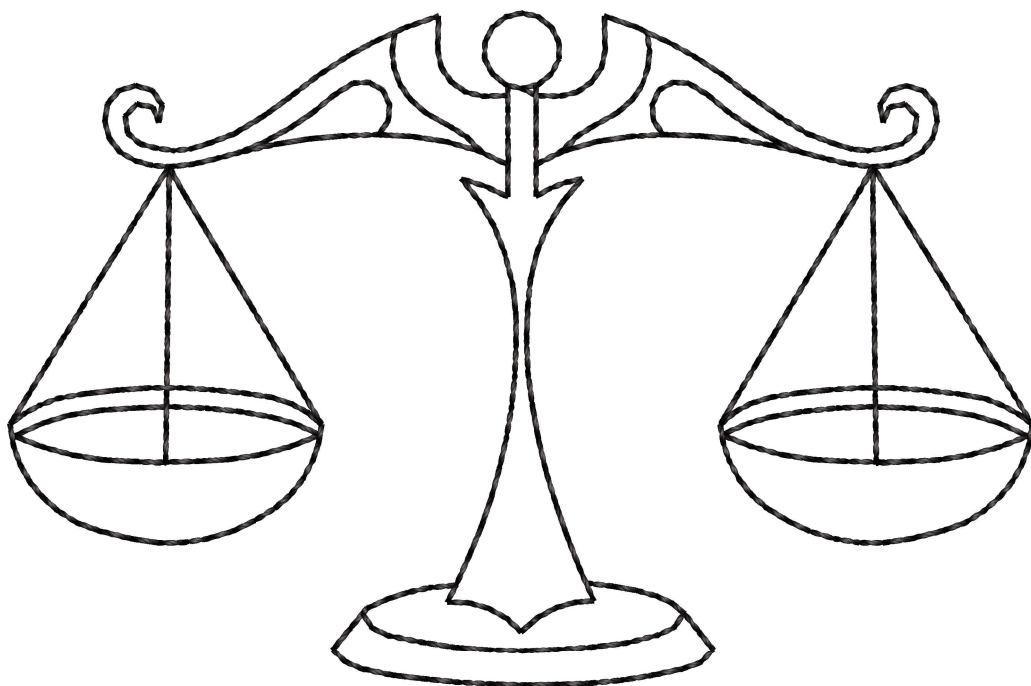
#	Color	Element	Code	Name	Chart
1.	1		0020	Black	Isacord 40

Thread usage: 4.83m

#	Color	Name	Length
1.	1	Black	4.83m

Cord usage: 0.00m

CS#	Color	Diameter	Length
-----	-------	----------	--------



Libra

Design:Libra 65mm.EMB

Height: 65.5 mm

Width: 80.6 mm

Stitches: 1,240

Colors: 1

Color changes: 0

Trims: 1

Machine format: Janome

Hoop: Tubular 2

Fabric type: Pure Cotton

Required stabilizer: Topping:

Backing: Tear Away x 2

Total bobbin: 1.70m

Color Sequence:

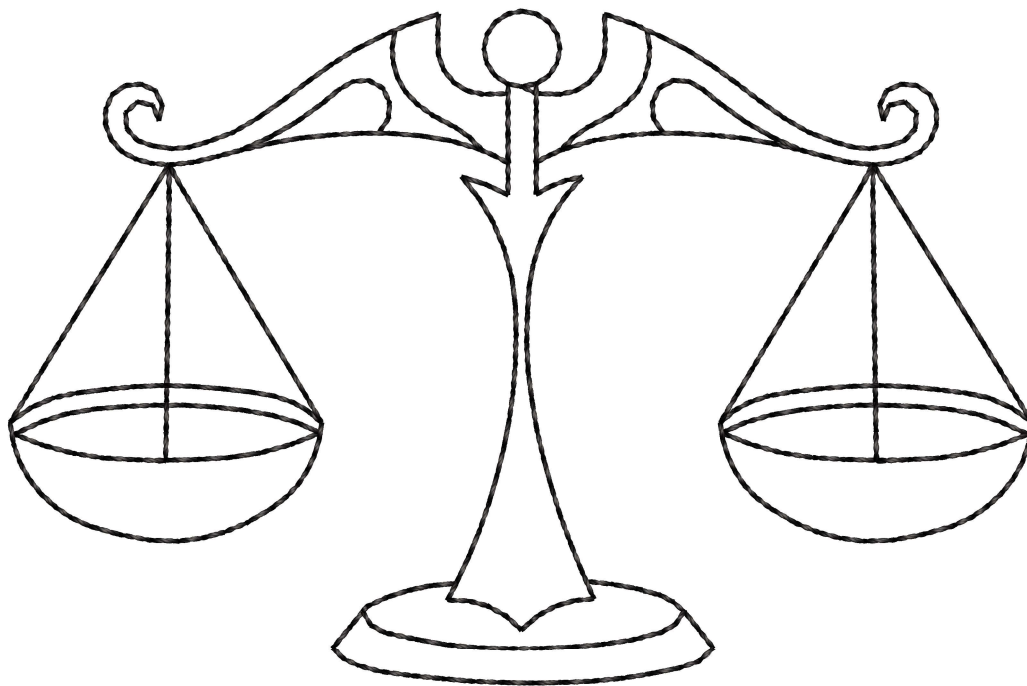
#	Color	Element	Code	Name	Chart
1.	1		0020	Black	Isacord 40

Thread usage: 5.34m

#	Color	Name	Length
1.	1	Black	5.34m

Cord usage: 0.00m

CS#	Color	Diameter	Length
-----	-------	----------	--------



Libra

Design:Libra 73mm.EMB

Height: 72.8 mm
 Width: 89.5 mm
 Stitches: 1,367
 Colors: 1
 Color changes: 0
 Trims: 1
 Machine format: Janome
 Hoop: Tubular 2
 Fabric type: Pure Cotton
 Required stabilizer: Topping:
 Backing: Tear Away x 2
 Total bobbin: 1.91m

Color Sequence:

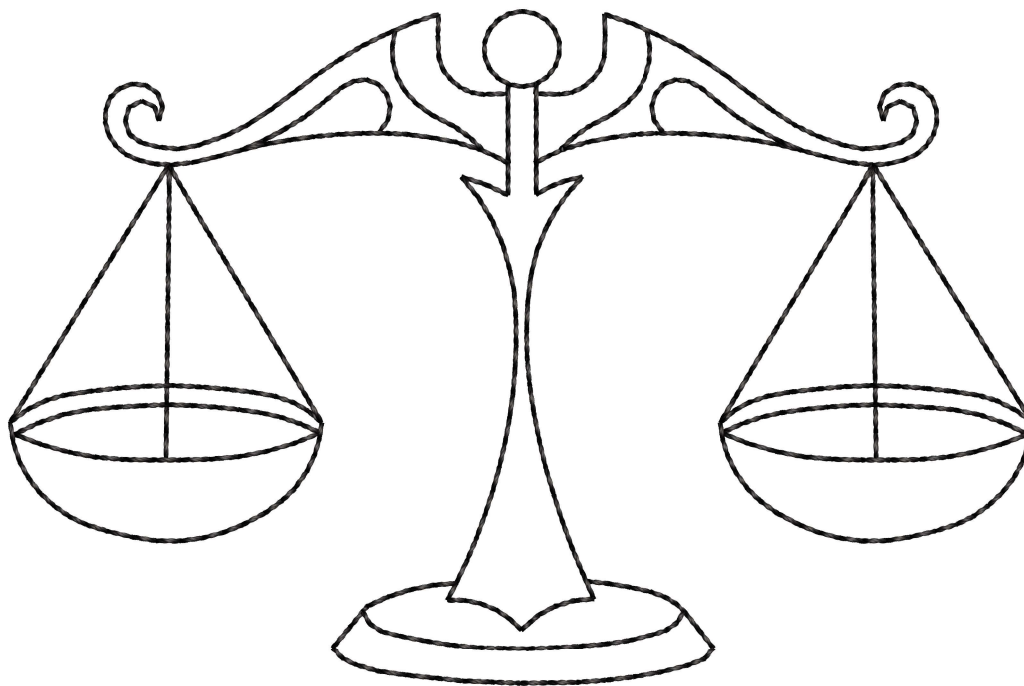
#	Color	Element	Code	Name	Chart
1.	1		0020	Black	Isacord 40

Thread usage: 5.96m

#	Color	Name	Length
1.	1	Black	5.96m

Cord usage: 0.00m

CS#	Color	Diameter	Length
-----	-------	----------	--------



Libra

Design:Pisces 79mm.EMB

Height: 79.1 mm

Width: 50.5 mm

Stitches: 1,370

Colors: 1

Color changes: 0

Trims: 4

Machine format: Janome

Hoop: Tubular 2

Fabric type: Pure Cotton

Required stabilizer: Topping:
Backing: Tear Away x 2

Total bobbin: 1.66m

Color Sequence:

#	Color	Element	Code	Name	Chart
1.	1		0020	Black	Isacord 40

Thread usage: 5.54m

#	Color	Name	Length
1.	1	Black	5.54m

Cord usage: 0.00m

CS#	Color	Diameter	Length
-----	-------	----------	--------



Design:Pisces 88mm.EMB

Height: 87.9 mm
 Width: 56.1 mm
 Stitches: 1,506
 Colors: 1
 Color changes: 0
 Trims: 4
 Machine format: Janome
 Hoop: Tubular 2
 Fabric type: Pure Cotton
 Required stabilizer: Topping:
 Backing: Tear Away x 2
 Total bobbin: 1.87m

Color Sequence:

#	Color	Element	Code	Name	Chart
1.	1		0020	Black	Isacord 40

Thread usage: 6.18m

#	Color	Name	Length
1.	1	Black	6.18m

Cord usage: 0.00m

CS#	Color	Diameter	Length
-----	-------	----------	--------



Pisces

Design:Pisces 97mm.EMB

Height: 97.6 mm
 Width: 62.3 mm
 Stitches: 1,578
 Colors: 1
 Color changes: 0
 Trims: 4
 Machine format: Janome
 Hoop: Tubular 2
 Fabric type: Pure Cotton
 Required stabilizer: Topping:
 Backing: Tear Away x 2
 Total bobbin: 2.09m

Color Sequence:

#	Color	Element	Code	Name	Chart
1.	1		0020	Black	Isacord 40

Thread usage: 6.68m

#	Color	Name	Length
1.	1	Black	6.68m

Cord usage: 0.00m

CS#	Color	Diameter	Length
-----	-------	----------	--------



Pisces

Design:Sagittarius 72mm.EMB

Height: 72.2 mm

Width: 74.5 mm

Stitches: 1,321

Colors: 1

Color changes: 0

Trims: 1

Machine format: Janome

Hoop: Tubular 2

Fabric type: Pure Cotton

Required stabilizer: Topping:
Backing: Tear Away x 2

Total bobbin: 1.51m

Color Sequence:

#	Color	Element	Code	Name	Chart
1.	1		0020	Black	Isacord 40

Thread usage: 5.19m

#	Color	Name	Length
1.	1	Black	5.19m

Cord usage: 0.00m

CS#	Color	Diameter	Length
-----	-------	----------	--------



Sagittarius

Design:Sagittarius 80mm.EMB

Height: 80.3 mm
 Width: 82.8 mm
 Stitches: 1,475
 Colors: 1
 Color changes: 0
 Trims: 3
 Machine format: Janome
 Hoop: Tubular 2
 Fabric type: Pure Cotton
 Required stabilizer: Topping:
 Backing: Tear Away x 2
 Total bobbin: 1.74m

Color Sequence:

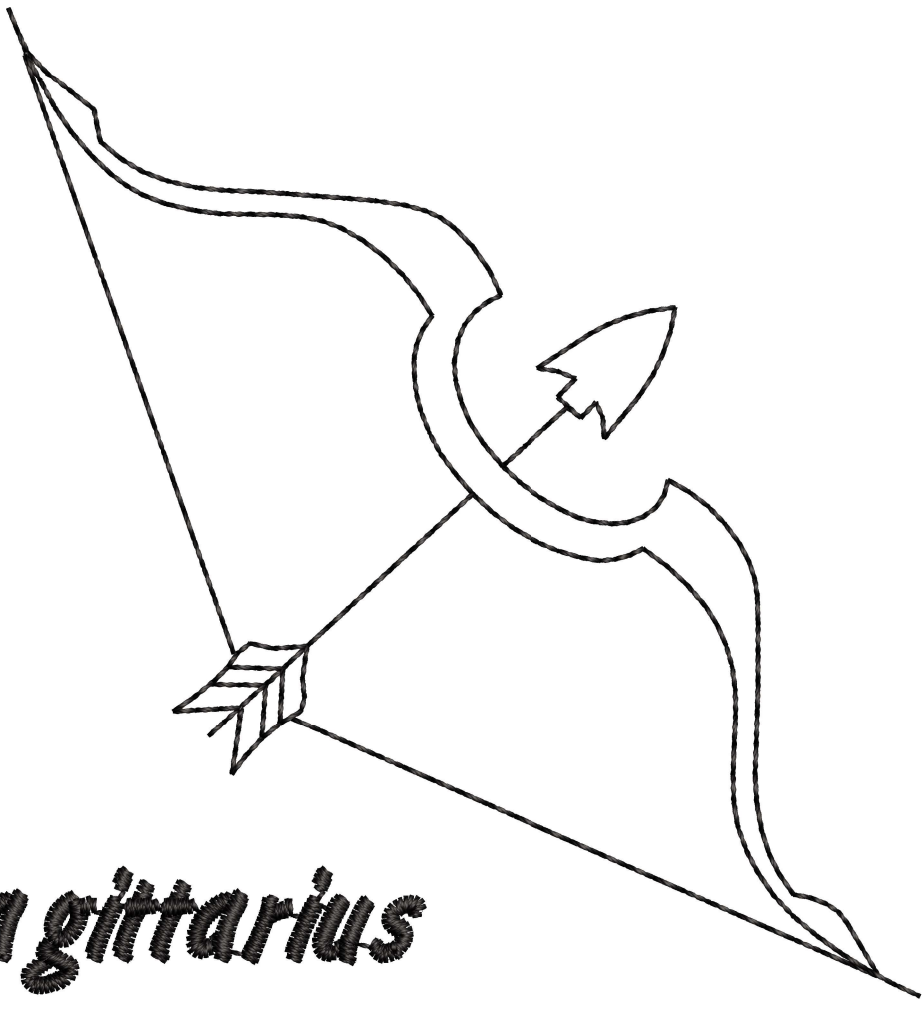
#	Color	Element	Code	Name	Chart
1.	1		0020	Black	Isacord 40

Thread usage: 5.89m

#	Color	Name	Length
1.	1	Black	5.89m

Cord usage: 0.00m

CS#	Color	Diameter	Length
-----	-------	----------	--------



Sagittarius

Design:Sagittarius 89mm.EMB

Height: 89.2 mm

Width: 92.0 mm

Stitches: 1,612

Colors: 1

Color changes: 0

Trims: 3

Machine format: Janome

Hoop: Tubular 2

Fabric type: Pure Cotton

Required stabilizer: Topping:
Backing: Tear Away x 2

Total bobbin: 2.00m

Color Sequence:

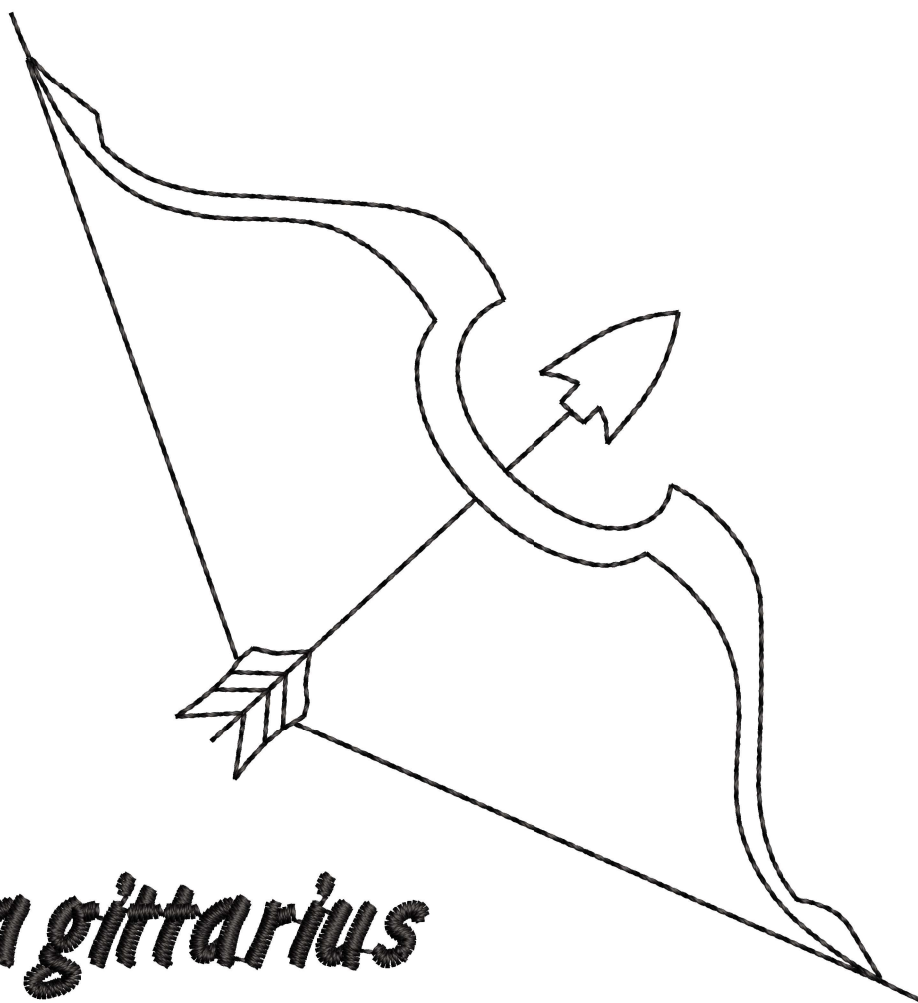
#	Color	Element	Code	Name	Chart
1.	1		0020	Black	Isacord 40

Thread usage: 6.60m

#	Color	Name	Length
1.	1	Black	6.60m

Cord usage: 0.00m

CS#	Color	Diameter	Length
-----	-------	----------	--------



Sagittarius

Design:Scorpio 73mm.EMB

Height: 72.5 mm
 Width: 66.5 mm
 Stitches: 1,540
 Colors: 1
 Color changes: 0
 Trims: 1
 Machine format: Janome
 Hoop: Tubular 2
 Fabric type: Pure Cotton
 Required stabilizer: Topping:
 Backing: Tear Away x 2
 Total bobbin: 1.68m

Color Sequence:

#	Color	Element	Code	Name	Chart
1.	1		0020	Black	Isacord 40

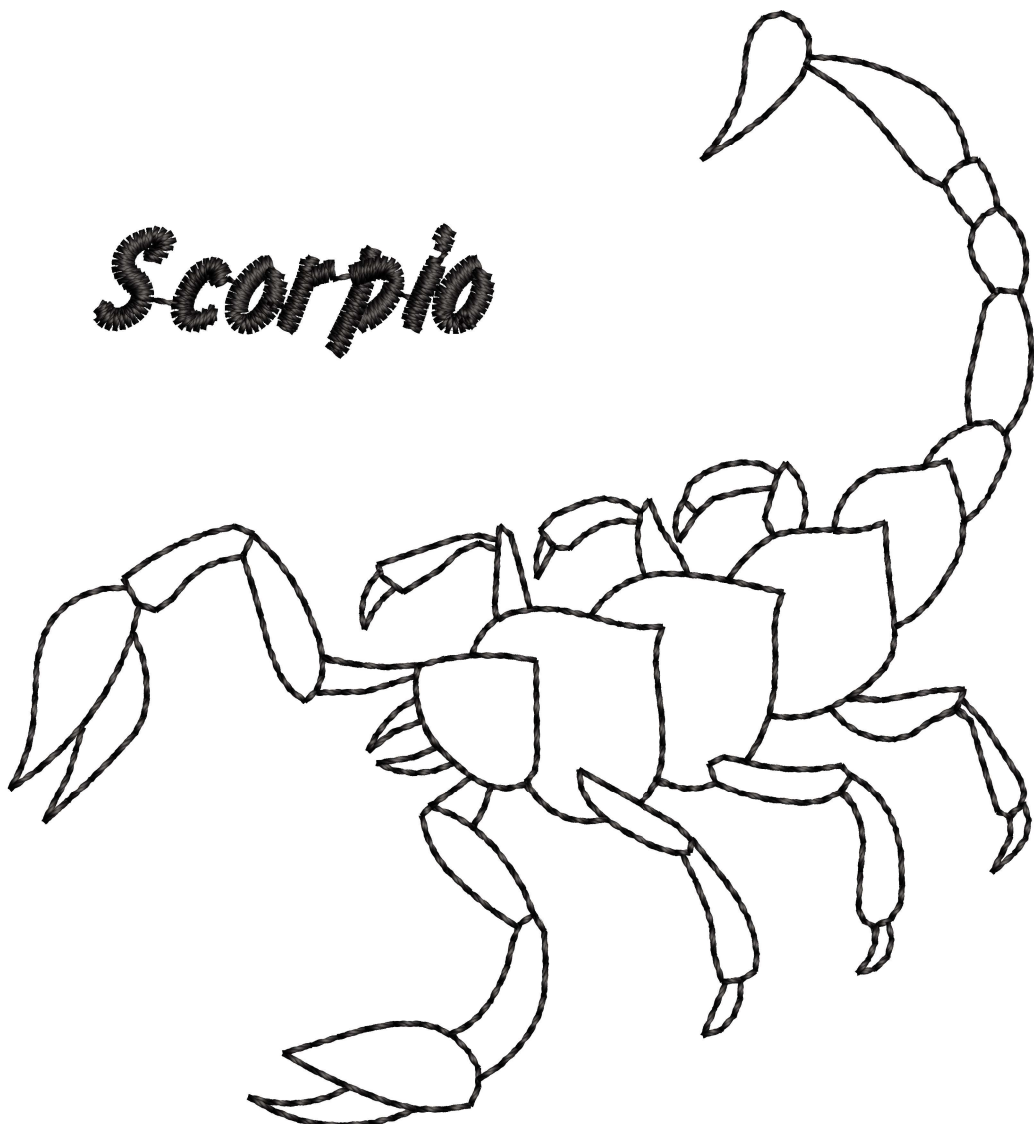
Thread usage: 5.91m

#	Color	Name	Length
1.	1	Black	5.91m

Cord usage: 0.00m

CS#	Color	Diameter	Length
-----	-------	----------	--------

Scorpio



Design:Scorpio 81mm.EMB

Height: 80.5 mm
 Width: 73.9 mm
 Stitches: 1,666
 Colors: 1
 Color changes: 0
 Trims: 2
 Machine format: Janome
 Hoop: Tubular 2
 Fabric type: Pure Cotton
 Required stabilizer: Topping:
 Backing: Tear Away x 2
 Total bobbin: 1.90m

Color Sequence:

#	Color	Element	Code	Name	Chart
1.	1		0020	Black	Isacord 40

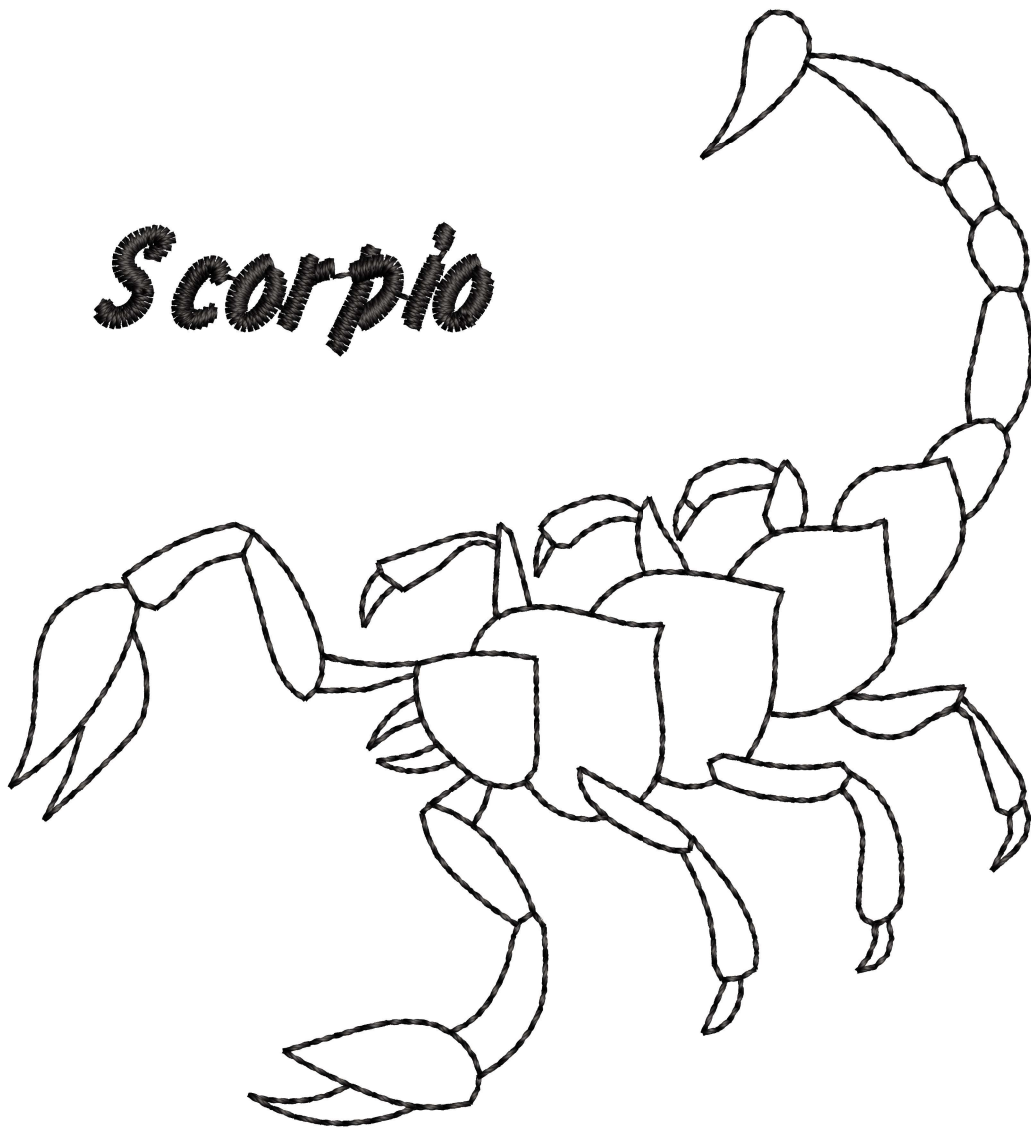
Thread usage: 6.53m

#	Color	Name	Length
1.	1	Black	6.53m

Cord usage: 0.00m

CS#	Color	Diameter	Length
-----	-------	----------	--------

Scorpio



Design:Scorpio 90mm.JEF

Height: 89.5 mm
 Width: 82.1 mm
 Stitches: 1,793
 Colors: 1
 Color changes: 0
 Trims: 2
 Machine format: Janome
 Hoop: Tubular 2
 Fabric type: Pure Cotton
 Required stabilizer: Topping:
 Backing: Tear Away x 2
 Total bobbin: 2.15m

Color Sequence:

#	Color	Element	Code	Name	Chart
1.	1		0020	Black	Isacord 40

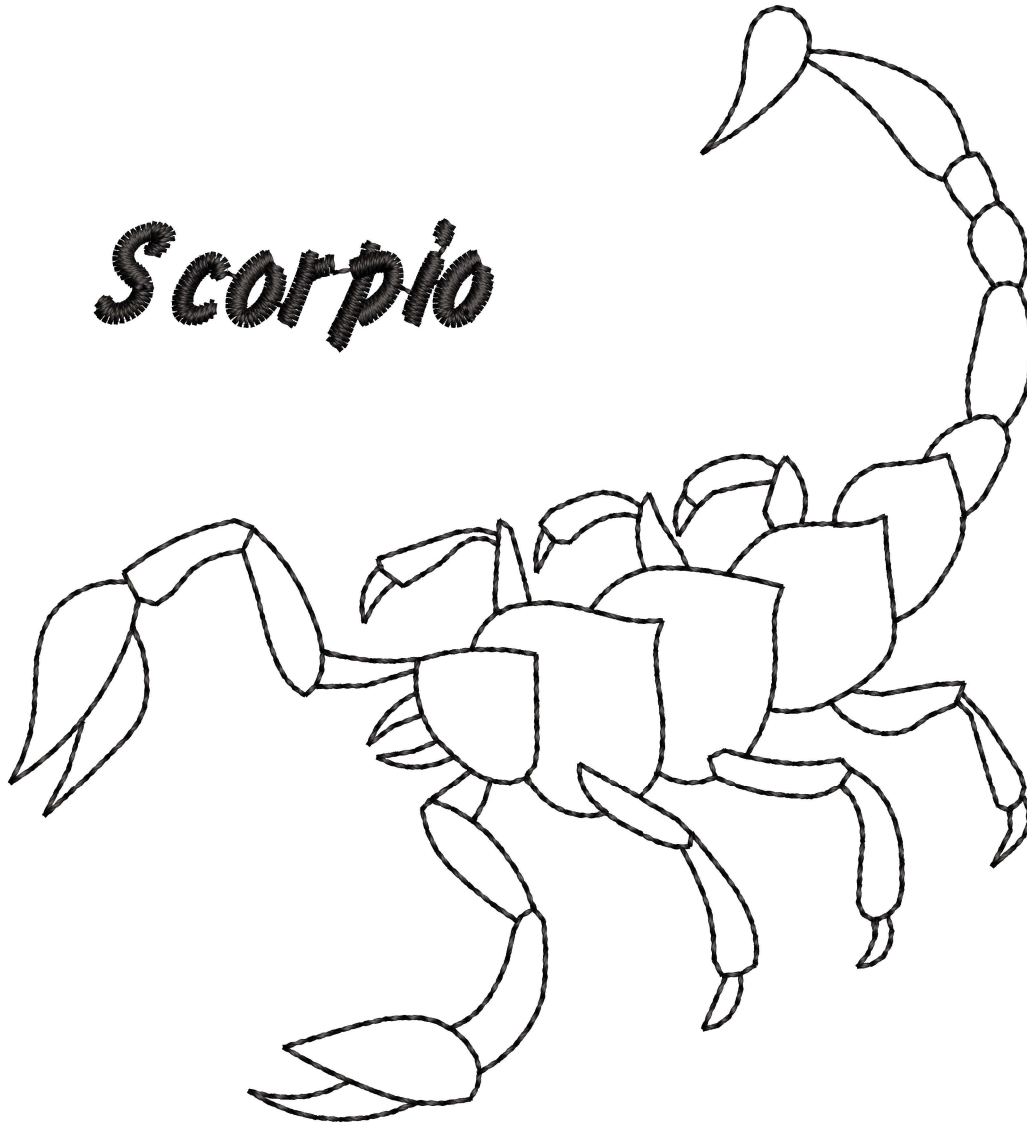
Thread usage: 7.21m

#	Color	Name	Length
1.	1	Black	7.21m

Cord usage: 0.00m

CS#	Color	Diameter	Length
-----	-------	----------	--------

Scorpio



Design:Taurus 80mm.EMB

Height: 80.4 mm
 Width: 59.3 mm
 Stitches: 1,282
 Colors: 1
 Color changes: 0
 Trims: 4
 Machine format: Janome
 Hoop: Tubular 2
 Fabric type: Pure Cotton
 Required stabilizer: Topping:
 Backing: Tear Away x 2
 Total bobbin: 1.43m

Color Sequence:

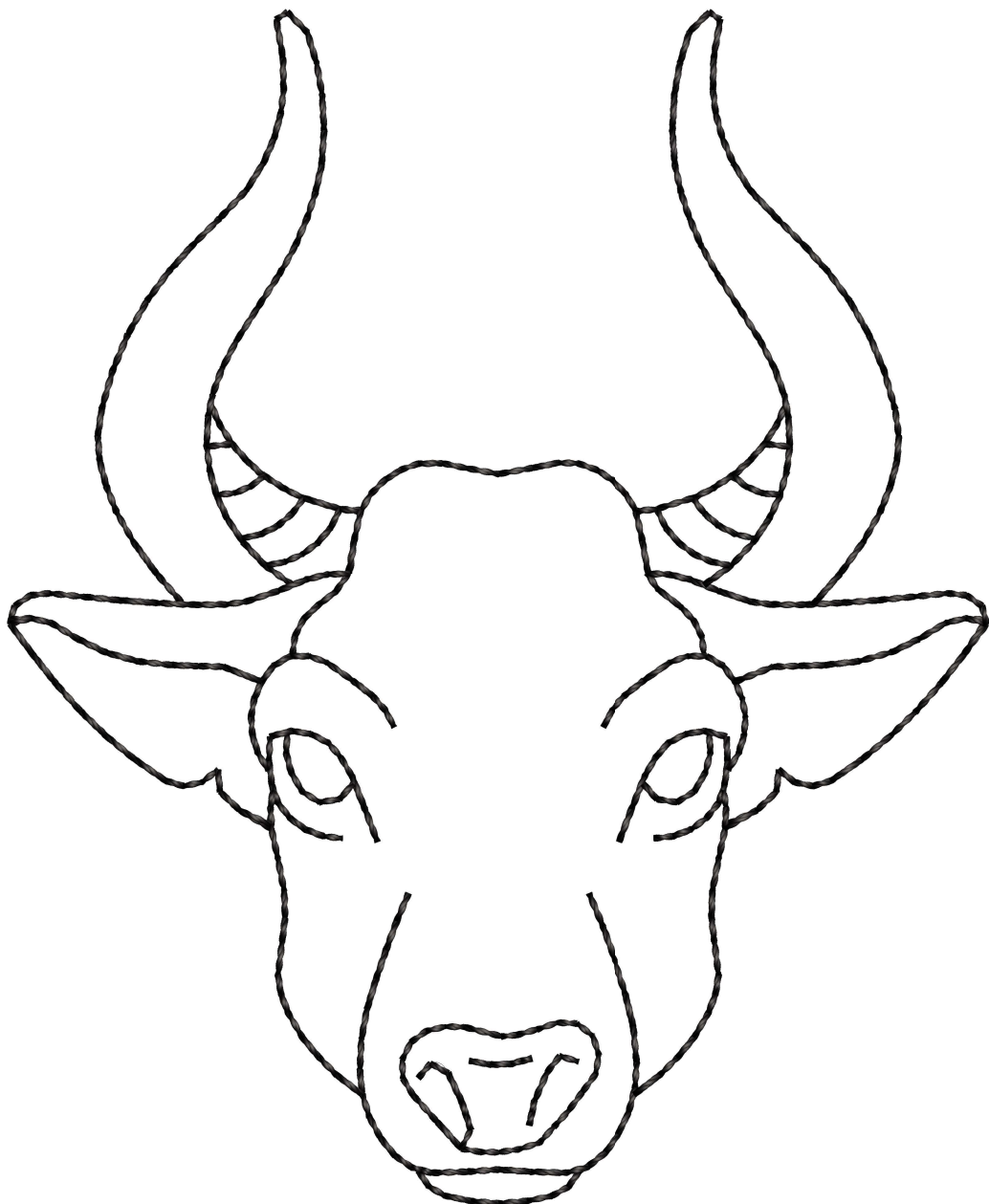
#	Color	Element	Code	Name	Chart
1.	1		0020	Black	Isacord 40

Thread usage: 4.98m

#	Color	Name	Length
1.	1	Black	4.98m

Cord usage: 0.00m

CS#	Color	Diameter	Length
-----	-------	----------	--------



Taurus

Design:Taurus 89mm.EMB

Height: 89.4 mm
 Width: 65.9 mm
 Stitches: 1,398
 Colors: 1
 Color changes: 0
 Trims: 5
 Machine format: Janome
 Hoop: Tubular 2
 Fabric type: Pure Cotton
 Required stabilizer: Topping:
 Backing: Tear Away x 2
 Total bobbin: 1.62m

Color Sequence:

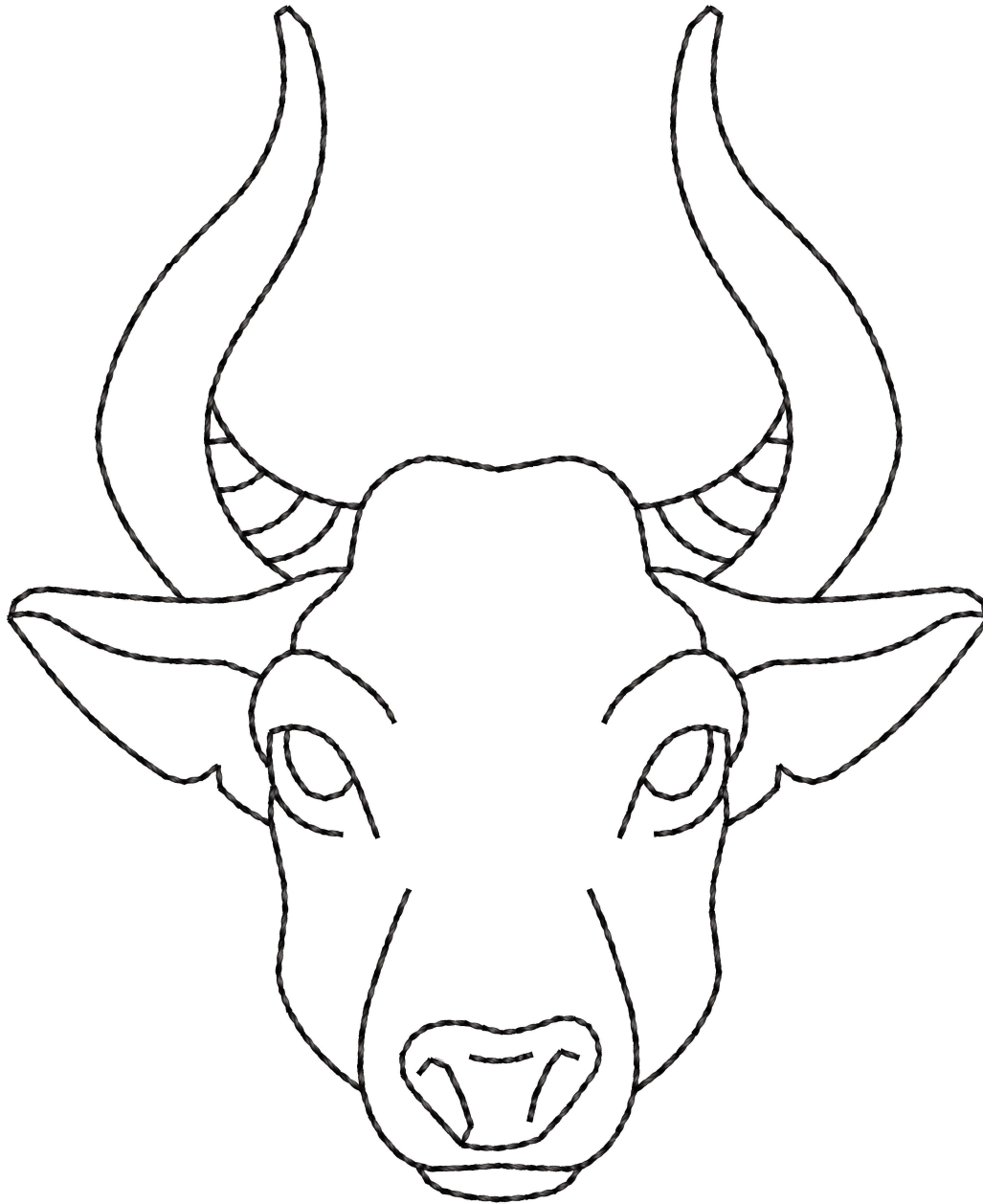
#	Color	Element	Code	Name	Chart
1.	1		0020	Black	Isacord 40

Thread usage: 5.54m

#	Color	Name	Length
1.	1	Black	5.54m

Cord usage: 0.00m

CS#	Color	Diameter	Length
-----	-------	----------	--------



Taurus

Design:Taurus 99mm.EMB

Height: 99.3 mm

Width: 73.2 mm

Stitches: 1,536

Colors: 1

Color changes: 0

Trims: 5

Machine format: Janome

Hoop: Tubular 2

Fabric type: Pure Cotton

Required stabilizer: Topping:

Backing: Tear Away x 2

Total bobbin: 1.84m

Color Sequence:

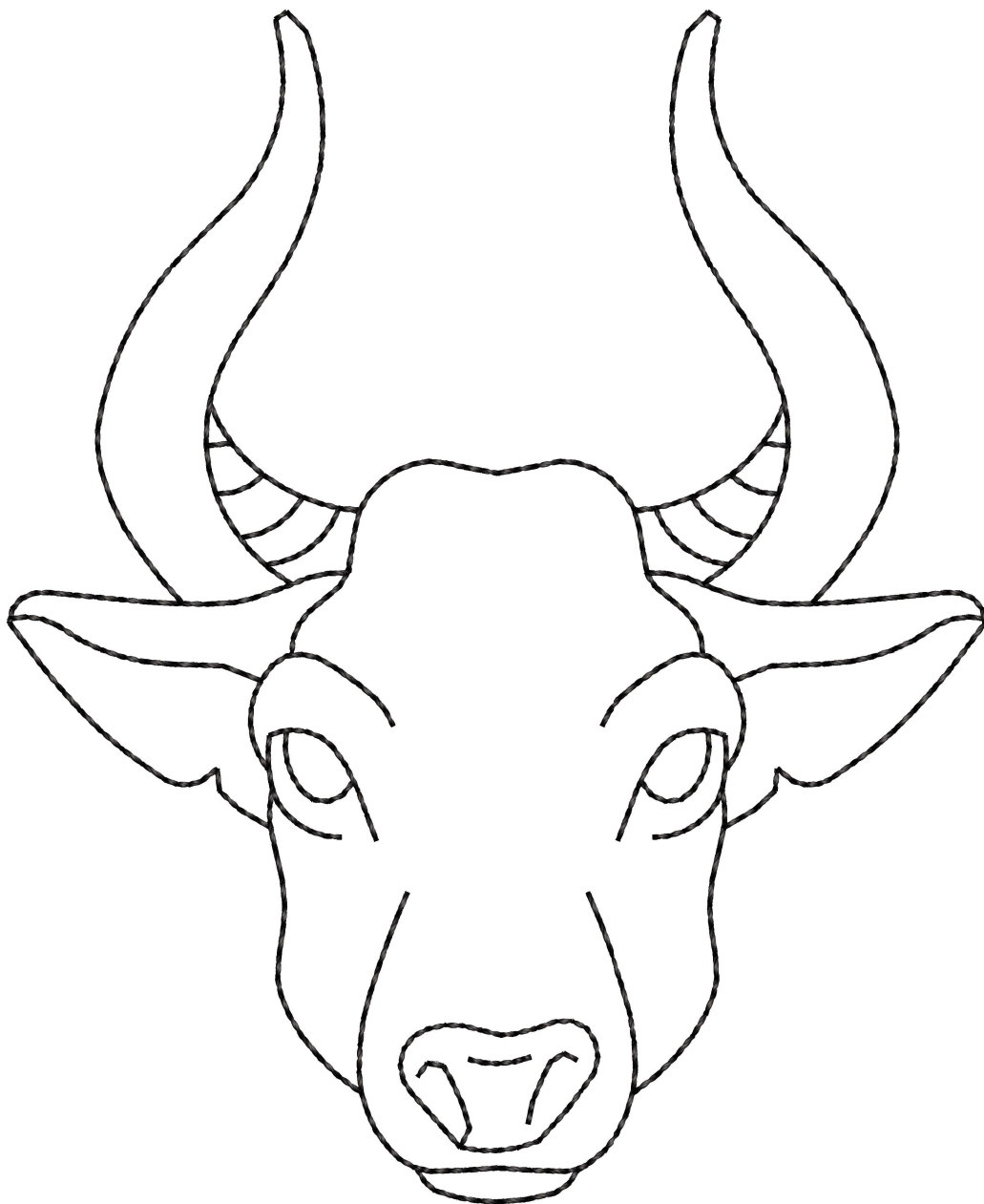
#	Color	Element	Code	Name	Chart
1.	1		0020	Black	Isacord 40

Thread usage: 6.17m

#	Color	Name	Length
1.	1	Black	6.17m

Cord usage: 0.00m

CS#	Color	Diameter	Length
-----	-------	----------	--------



Taurus

Design:Virgo 73mm.EMB

Height: 72.5 mm
 Width: 60.4 mm
 Stitches: 1,869
 Colors: 1
 Color changes: 0
 Trims: 4
 Machine format: Janome
 Hoop: Tubular 2
 Fabric type: Pure Cotton
 Required stabilizer: Topping:
 Backing: Tear Away x 2
 Total bobbin: 2.14m

Color Sequence:

#	Color	Element	Code	Name	Chart
1.	1		0020	Black	Isacord 40

Thread usage: 7.34m

#	Color	Name	Length
1.	1	Black	7.34m

Cord usage: 0.00m

CS#	Color	Diameter	Length
-----	-------	----------	--------



Design:Virgo 81mm.EMB

Height: 80.5 mm
 Width: 67.1 mm
 Stitches: 2,006
 Colors: 1
 Color changes: 0
 Trims: 4
 Machine format: Janome
 Hoop: Tubular 2
 Fabric type: Pure Cotton
 Required stabilizer: Topping:
 Backing: Tear Away x 2
 Total bobbin: 2.39m

Color Sequence:

#	Color	Element	Code	Name	Chart
1.	1		0020	Black	Isacord 40

Thread usage: 8.05m

#	Color	Name	Length
1.	1	Black	8.05m

Cord usage: 0.00m

CS#	Color	Diameter	Length
-----	-------	----------	--------



Design:Virgo 90mm.EMB

Height: 89.5 mm

Width: 74.5 mm

Stitches: 2,148

Colors: 1

Color changes: 0

Trims: 4

Machine format: Janome

Hoop: Tubular 2

Fabric type: Pure Cotton

Required stabilizer: Topping:

Backing: Tear Away x 2

Total bobbin: 2.68m

Color Sequence:

#	Color	Element	Code	Name	Chart
1.	1		0020	Black	Isacord 40

Thread usage: 8.83m

#	Color	Name	Length
1.	1	Black	8.83m

Cord usage: 0.00m

CS#	Color	Diameter	Length
-----	-------	----------	--------



Virgo