



Creative Fabrica

**Embroidery Design
Sewing Information**

www.creativefabrica.com/embroidery/

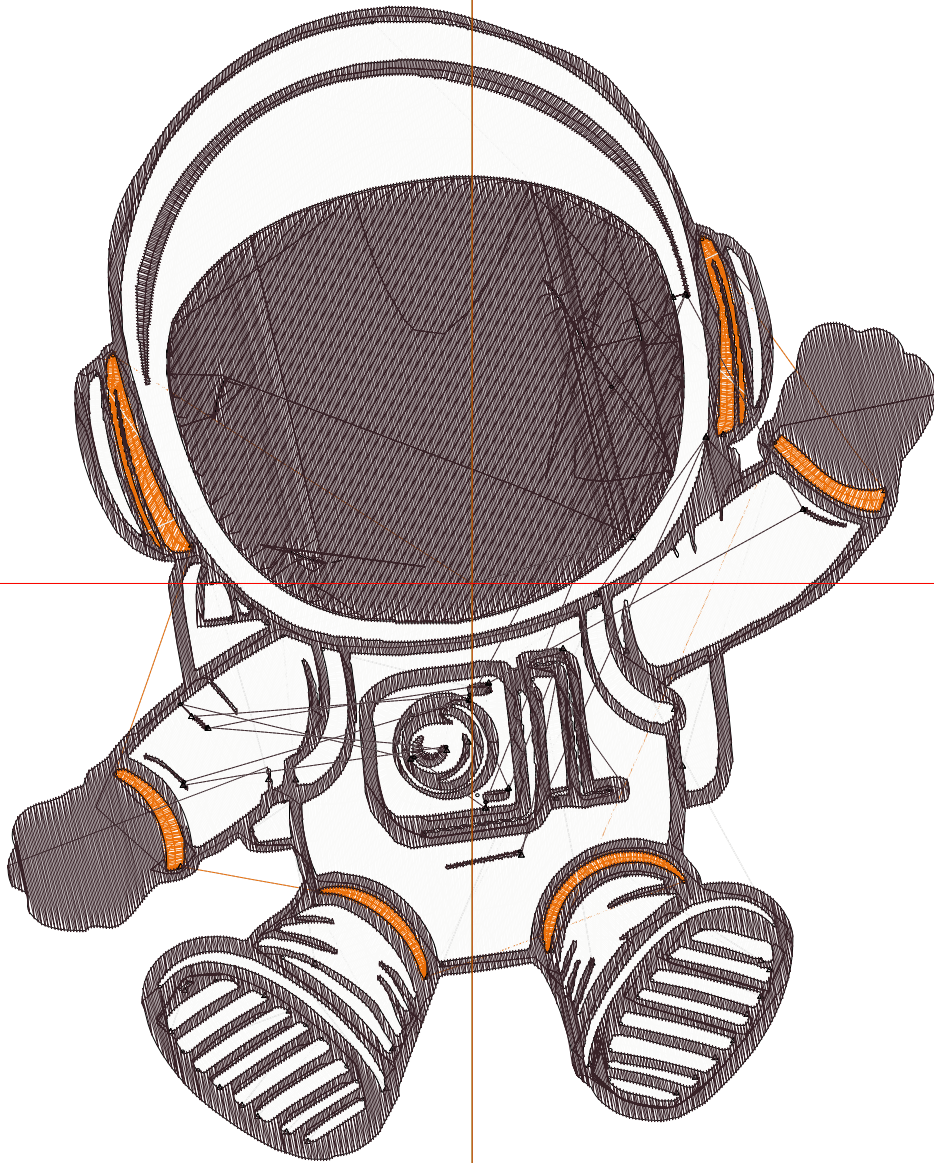
© Creative Fabrica

Design:Astronaut 6 Inches.EMB

Height: 6.01 in
 Width: 4.84 in
 Stitches: 44,521
 Colors: 3
 Color changes: 2
 Trims: 64
 Hoop: Hoop SQ23 (230 x 230)
 Fabric type: Pure Cotton
 Required stabilizer: Topping:
 Backing: Tear Away x 2
 Total bobbin: 222.64ft

Color Sequence:

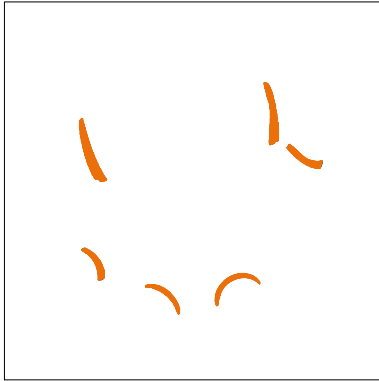
#	Color	Code	Name	Chart
1.	15	1102	Pumpkin	Isacord 40
2.	92		R250 G250 B249	
3.	88		R56 G34 B39	



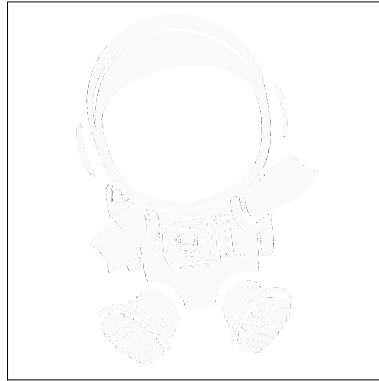
S

E

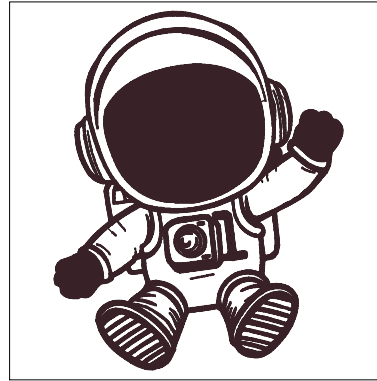
E



Color: 15
Stop: 1
Element:
Code: 1102
Name: Pumpkin
Chart: Isacord 40
Stitches: 3,072
Thread used: 33.51ft



Color: 92
Stop: 2
Element:
Code:
Name: R250 G250 B249
Chart:
Stitches: 21,335
Thread used: 303.58ft



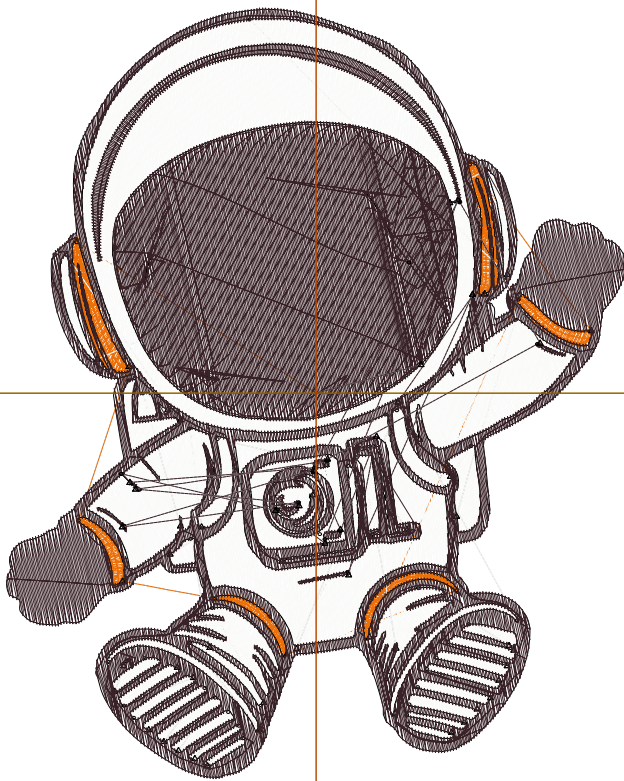
Color: 88
Stop: 3
Element:
Code:
Name: R56 G34 B39
Chart:
Stitches: 20,114
Thread used: 330.75ft

Design:Astronaut 4 Inches.EMB

Height: 4.01 in
 Width: 3.23 in
 Stitches: 26,721
 Colors: 3
 Color changes: 2
 Trims: 63
 Hoop: Hoop SQ23 (230 x 230)
 Fabric type: Pure Cotton
 Required stabilizer: Topping:
 Backing: Tear Away x 2
 Total bobbin: 109.90ft

Color Sequence:

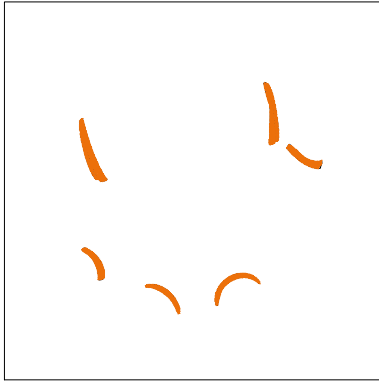
#	Color	Code	Name	Chart
1.	15	1102	Pumpkin	Isacord 40
2.	92		R250 G250 B249	
3.	88		R56 G34 B39	



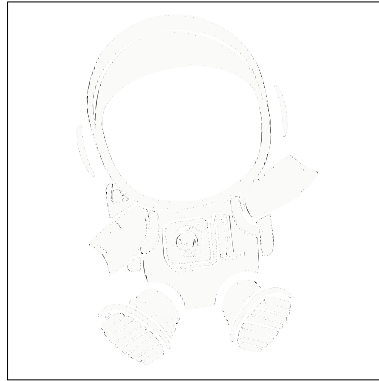
S

E

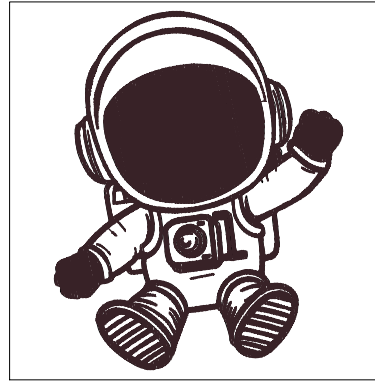
E



Color: 15
Stop: 1
Element:
Code: 1102
Name: Pumpkin
Chart: Isacord 40
Stitches: 1,947
Thread used: 20.06ft



Color: 92
Stop: 2
Element:
Code:
Name: R250 G250 B249
Chart:
Stitches: 13,070
Thread used: 167.82ft



Color: 88
Stop: 3
Element:
Code:
Name: R56 G34 B39
Chart:
Stitches: 11,704
Thread used: 172.91ft