



Creative Fabrica

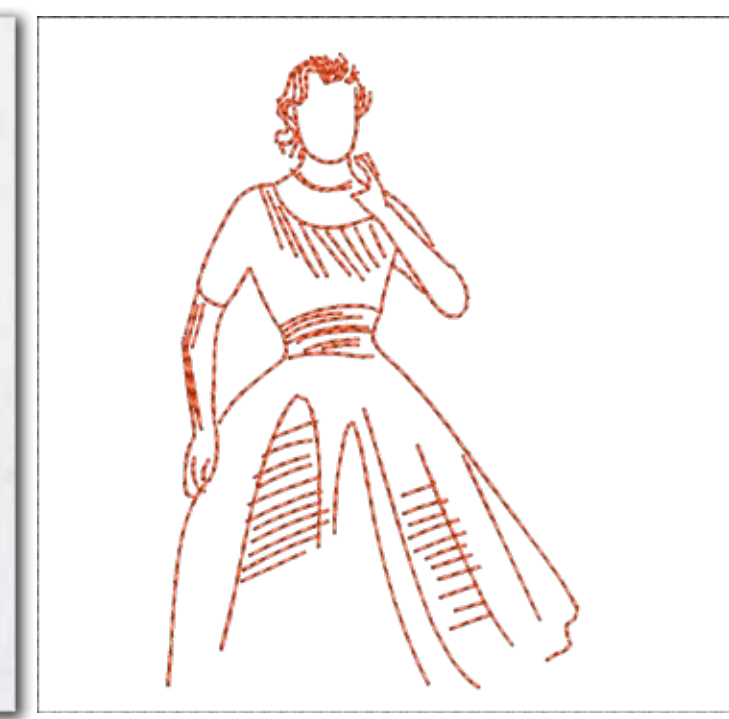
**Embroidery Design
Sewing Information**

www.creativefabrica.com/embroidery/

© Creative Fabrica

6 SIZES

(PES, DST, HUS, JEF, CSD, DST, EXP, SHV, VIP,VP3, XXX)



SIZE	Width mm	Height mm	Width in	Height in	Stitch Count	Colors
3in	75.0	75.0	2.95	2.95	1255	2
4in	98.0	98.0	3.86	3.86	1511	2
5in	128.0	128.0	5.04	5.04	1888	2
6in	158.0	158.0	6.22	6.22	2234	2
7in	175.0	175.0	6.89	6.89	2453	2
8in	195.0	195.0	7.68	7.68	2670	2
					<i>Redwork101</i> Machine Embroidery Designs	