



Creative Fabrica

**Embroidery Design
Sewing Information**

www.creativefabrica.com/embroidery/

© Creative Fabrica

Approval Sheet

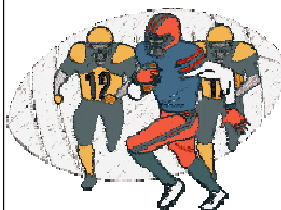
Wilcom EmbroideryStudio - Designing



Design: **10**

Title:

Height: 10.01 in
Width: 14.05 in
Colors: 10
Colorway: Colorway 1
Zoom: 0.54



Product type:
Product:
Total qty:
Product colors:
Position:

Terms and Conditions:
Embroidery by MemoDesign Shop

Approved By:

Date:

Production Worksheet

Wilcom EmbroideryStudio - Designing



Design: **10**

Title:

Stitches: 139,135
 Height: 10.01 in
 Width: 14.05 in
 Colors: 10
 Colorway: Colorway 1
 Zoom: 0.54



Machine format: Tajima
 Color changes: 9
 Stops: 10
 Trims: 93
 Appliqués: 0
 Left: 178.5 mm
 Right: 178.4 mm
 Up: 127.1 mm
 Down: 127.1 mm
 EndX: 0.00 in
 EndY: 0.00 in
 Area: 140.63 in²
 Max stitch: 12.0 mm
 Min stitch: 0.1 mm
 Max jump: 7.3 mm
 Total thread: 2543.84ft
 Total bobbin: 964.50ft

Stop Sequence:

#	N#	Color	St.	Code	Name	Chart
1.	25		939		R175 G86 B10	
2.	16		53,760		R255 G255 B255	
3.	17		5,311		R232 G223 B225	
4.	18		11,875		R255 G144 B24	
5.	19		12,227		R229 G32 B0	
6.	20		2,907		R117 G119 B119	
7.	21		40,436		R24 G46 B52	
8.	22		7,037		R0 G52 B90	
9.	23		3,705		R0 G40 B47	
10.	24		936		R0 G0 B0	

Machine runtime:

Machine **Runtime (hr:min:sec)**

Machine-1 2:47:07



Approval Sheet

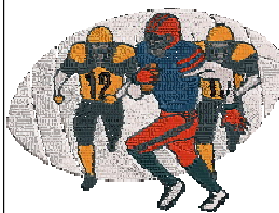
Wilcom EmbroideryStudio - Designing



Design: **8**

Title:

Height: 8.01 in
Width: 11.23 in
Colors: 10
Colorway: Colorway 1
Zoom: 0.68



Product type:
Product:
Total qty:
Product colors:
Position:

Terms and Conditions:
Embroidery by MemoDesign Shop

Approved By:

Date:

Production Worksheet

Wilcom EmbroideryStudio - Designing



Design: **8**

Title:

Stitches: 99,219
Height: 8.01 in
Width: 11.23 in
Colors: 10
Colorway: Colorway 1
Zoom: 0.67



Machine format: Tajima
Color changes: 9
Stops: 10
Trims: 88
Appliqués: 0
Left: 142.8 mm
Right: 142.6 mm
Up: 101.7 mm
Down: 101.7 mm
EndX: 0.00 in
EndY: 0.00 in
Area: 89.98 in²
Max stitch: 12.0 mm
Min stitch: 0.0 mm
Max jump: 7.2 mm
Total thread: 1729.90ft
Total bobbin: 637.38ft

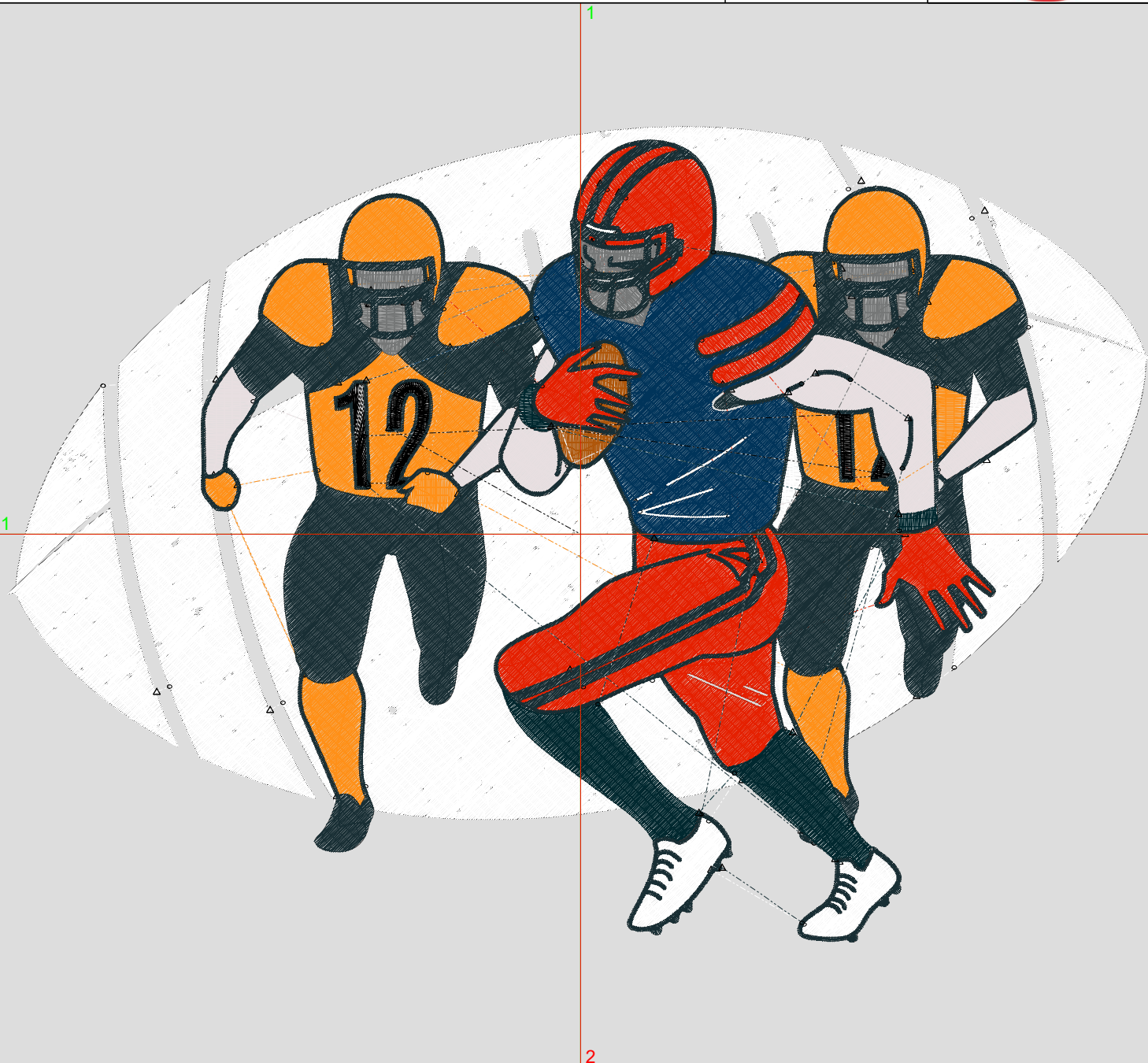
Stop Sequence:

#	N#	Color	St.	Code	Name	Chart
1.	25		693		R175 G86 B10	
2.	16		37,517		R255 G255 B255	
3.	17		3,684		R232 G223 B225	
4.	18		8,344		R255 G144 B24	
5.	19		8,799		R229 G32 B0	
6.	20		2,117		R117 G119 B119	
7.	21		29,872		R24 G46 B52	
8.	22		4,864		R0 G52 B90	
9.	23		2,558		R0 G40 B47	
10.	24		769		R0 G0 B0	

Machine runtime:

Machine **Runtime (hr:min:sec)**

Machine-1 2:02:09



Approval Sheet

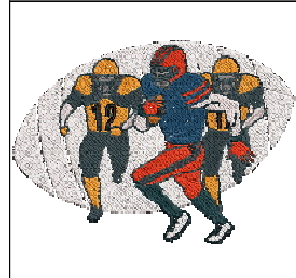
Wilcom EmbroideryStudio - Designing



Design: **6**

Title:

Height: 6.01 in
Width: 8.43 in
Colors: 10
Colorway: Colorway 1
Zoom: 0.90



Product type:
Product:
Total qty:
Product colors:
Position:

Terms and Conditions:
Embroidery by MemoDesign Shop

Approved By:

Date:

Production Worksheet

Wilcom EmbroideryStudio - Designing



Design: **6**

Title:

Stitches: 66,372

Height: 6.01 in

Width: 8.43 in

Colors: 10

Colorway: Colorway 1

Zoom: 0.90



Machine format: Tajima
 Color changes: 9
 Stops: 10
 Trims: 83
 Appliqués: 0
 Left: 107.0 mm
 Right: 107.1 mm
 Up: 76.3 mm
 Down: 76.3 mm
 EndX: 0.00 in
 EndY: 0.00 in
 Area: 50.65 in²
 Max stitch: 11.4 mm
 Min stitch: 0.0 mm
 Max jump: 7.2 mm
 Total thread: 1078.07ft
 Total bobbin: 378.83ft

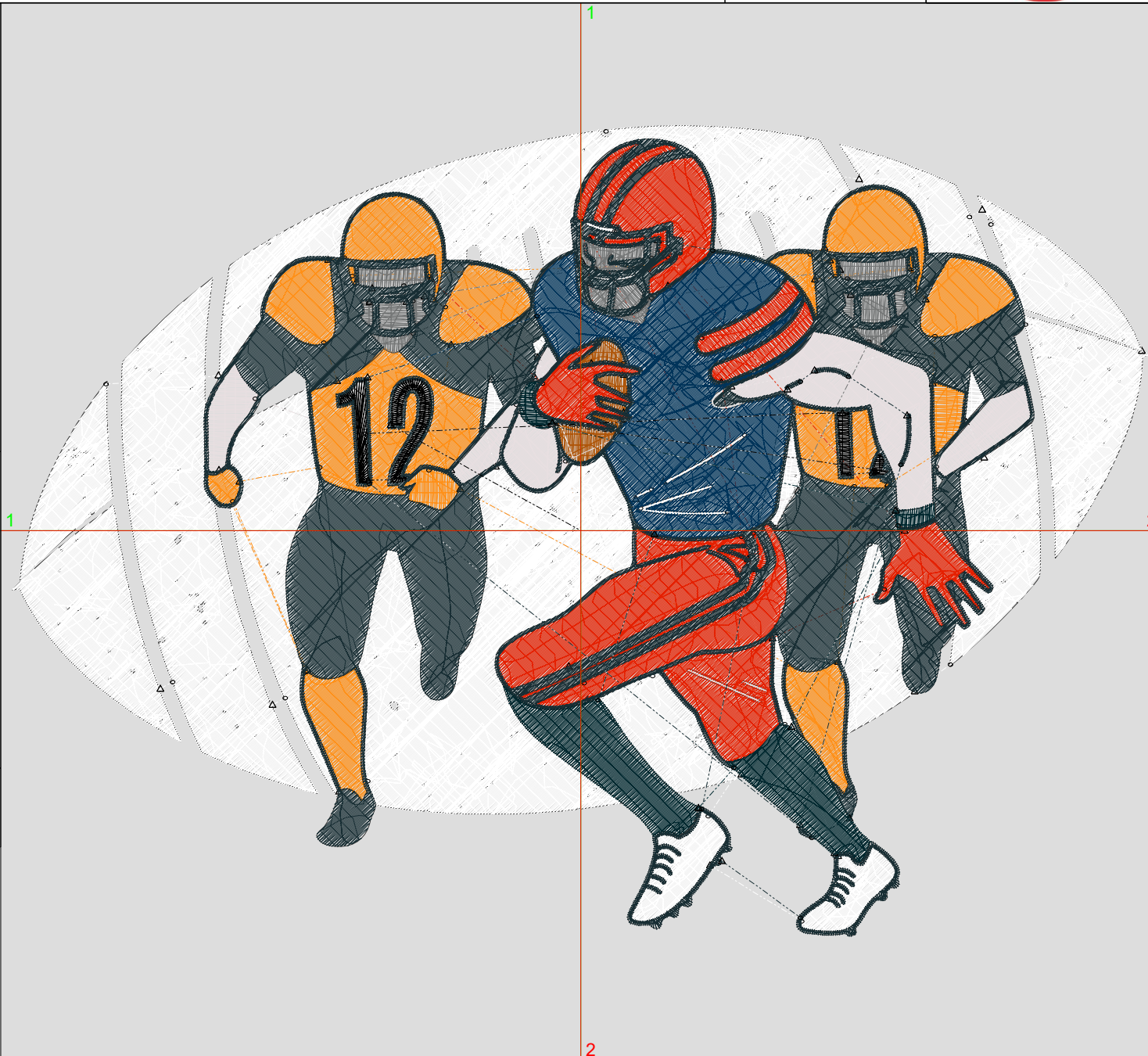
Stop Sequence:

#	N#	Color	St.	Code	Name	Chart
1.	25		494		R175 G86 B10	
2.	16		24,558		R255 G255 B255	
3.	17		2,407		R232 G223 B225	
4.	18		5,389		R255 G144 B24	
5.	19		5,855		R229 G32 B0	
6.	20		1,549		R117 G119 B119	
7.	21		20,849		R24 G46 B52	
8.	22		3,068		R0 G52 B90	
9.	23		1,638		R0 G40 B47	
10.	24		563		R0 G0 B0	

Machine runtime:

Machine **Runtime (hr:min:sec)**

Machine-1 1:25:04



Approval Sheet

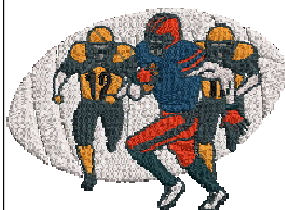
Wilcom EmbroideryStudio - Designing



Design: **4**

Title:

Height: 4.01 in
Width: 5.62 in
Colors: 10
Colorway: Colorway 1
Zoom: 1:1



Product type:
Product:
Total qty:
Product colors:
Position:

Terms and Conditions:
Embroidery by MemoDesign Shop

Approved By:

Date:

Production Worksheet

Wilcom EmbroideryStudio - Designing



Design: **4**

Title:

Stitches: 39,084

Height: 4.01 in

Width: 5.62 in

Colors: 10

Colorway: Colorway 1

Zoom: 1.35



Machine format: Tajima
 Color changes: 9
 Stops: 10
 Trims: 68
 Appliqués: 0
 Left: 71.5 mm
 Right: 71.3 mm
 Up: 50.9 mm
 Down: 50.9 mm
 EndX: 0.00 in
 EndY: 0.00 in
 Area: 22.53 in²
 Max stitch: 11.4 mm
 Min stitch: 0.0 mm
 Max jump: 7.3 mm
 Total thread: 578.24ft
 Total bobbin: 188.74ft

Stop Sequence:

#	N#	Color	St.	Code	Name	Chart
1.	25		309		R175 G86 B10	
2.	16		13,897		R255 G255 B255	
3.	17		1,361		R232 G223 B225	
4.	18		3,099		R255 G144 B24	
5.	19		3,446		R229 G32 B0	
6.	20		968		R117 G119 B119	
7.	21		13,061		R24 G46 B52	
8.	22		1,615		R0 G52 B90	
9.	23		927		R0 G40 B47	
10.	24		399		R0 G0 B0	

Machine runtime:

Machine **Runtime (hr:min:sec)**

Machine-1 0:52:56

